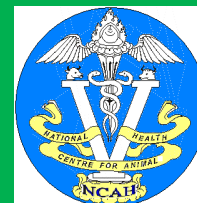




Royal Government of Bhutan
Ministry of Agriculture and Forests
Department of Livestock
National Centre for Animal Health
Serbithang: Thimphu



N
C
A
H



STATUS OF NOTIFIABLE ANIMAL DISEASES IN BHUTAN FOR 2017

VOLUME 4 ISSUE 7

National Centre for Animal Health, Department of Livestock, Ministry of Agriculture and Forests,
Serbithang, Thimphu, Bhutan

Compiled & Edited by Dr Tenzin Tenzin

FOREWORD

This bulletin on Status of Notifiable Animal Diseases in Bhutan for 2017 compiled by Disease Prevention and Control Unit (DPCU) of the National Centre for Animal Health provides an overview of all notifiable animal diseases reported in the country during 1996 to 2017. The main purpose of this bulletin is to provide an update on the notifiable animal disease situation in the country for information to all stakeholders including field livestock staff, veterinarians, central and regional farms and decision makers. The information contained in this report could also be used for preparedness and response plans by the concerned government agencies responsible for disease prevention and control.

During 2017, three major disease outbreaks has occurred in the country. Firstly, there was an incursion of rabies in Panbang area under Zhemgang dzongkhag from the bordering town, but was contained through implementation of various control measures including emergency mass dog vaccination and selective removal of infected and in-contact stray dogs. Secondly, rabies incursion that was occurred on 29 July 2016 at Merak Geog that subsequently spread to lower valley continued spreading Radhi, Rangjung and Trashigang town. The NCAH, RLDC Khangma and Dzongkhag Livestock Sector Trashigang had implemented strategic and rapid containment measures and was finally controlled in June 2017. The last case was reported on June 12, 2017. Thirdly, a major FMD outbreak had occurred in Paro dzongkhag during June through August 2017 and affected 764 cattle including 33 deaths in nine geogs.

I would like to thank the Director General and the CVO, AHD DoL for their support and guidance. I thank the Program Directors, Commodity Centres; the Regional Directors of RLDCs; DLOs and VO of 20 Dzongkhags; Managers of livestock farms for their support and cooperation. I would like to thank Dr. Tenzin Head, Disease Prevention and Control Unit, NCAH for taking lead in producing this report. Special thanks to all the TADInfo focal points at the Regional Livestock Development Centres, Satellite Veterinary Laboratories and Dzongkhag Veterinary Hospitals for their active disease reporting and investigation.

I hope this edition of the disease status report in the country will be useful and informative.

We wish you a happy reading!

Dr. Kinzang Dukpa
Program Director

TABLE OF CONTENTS

1. Introduction	5
2. Multiple species diseases	6
2.1. Foot and mouth disease	6
2.2. Rabies	9
2.3. Anthrax	13
3. Disease in cattle	14
3.1. Black Quarter	14
3.2. Hemorrhagic Septicemia	16
3.3. Brucellosis	19
4. Diseases in poultry	19
4.1. Infectious Bursal Disease	19
4.2. Avian Leucosis Complex	20
5. Disease in pigs	20
5.1. Classical Swine fever	20
7. Acknowledgements	21
8. References	21
9. Annexure	23
Annexure 1: Details of FMD outbreaks in the country (2012-2015) (Source: TADInfo database, NCAH)	23
Annexure 2: Details of FMD outbreaks during 2016 (Source: TADInfo database, NCAH)	25
Annexure 3: Details of FMD outbreaks during 2017 (Source: TADInfo database, NCAH)	25
Annexure 4: Details of Rabies outbreaks in the country (2012-2015) (Source: TADInfo database, NCAH)	26

Annexure 5: Details of Rabies outbreaks during 2016 (Source: TADInfo database, NCAH)	29
Annexure 6: Details of Rabies outbreaks during 2017 (Source: TADInfo database, NCAH)	31
Annexure 7: Details of Anthrax outbreaks in the country (2012-2015) (Source: TADInfo database, NCAH).....	32
Annexure 8: Details of Anthrax outbreaks during 2016 (Source: TADInfo database, NCAH).	33
Annexure 9: Details of Anthrax outbreaks during 2017 (Source: TADInfo database, NCAH).	33
Annexure 10: Details of Black Quarter outbreaks in the country (2012-2015) (Source: TADInfo database, NCAH).	33
Annexure 11: Details of Black Quarter outbreaks during 2016 (Source: TADInfo database, NCAH).	35
Annexure 12: Details of Black Quarter outbreaks during 2017 (Source: TADInfo database, NCAH).	36
Annexure 13: Details of Hemorrhagic Septicaemia outbreaks in the country (2012-2015) (Source: TADInfo database, NCAH).	36
Annexure 14: Details of Hemorrhagic Septicaemia outbreaks during 2016 (Source: TADInfo database, NCAH).	36
Annexure 15: Details of Hemorrhagic Septicaemia outbreaks during 2017 (Source: TADInfo database, NCAH).	37
Annexure 16: Details of Newcastle Disease outbreaks in the country (2012-2015) (Source: TADInfo database, NCAH).	37
Annexure 17: Details of IBD outbreaks in the country (2014-2015) (Source: TADInfo database, NCAH).....	38
Annexure 18: Details of Gumboro outbreaks during 2016 (Source: TADInfo database, NCAH).	38
Annexure 19: Details of Gumboro outbreaks during 2017 (Source: TADInfo database, NCAH).	39
Annexure 20: Details of mixed infection with Marek's disease and ALC outbreaks during 2016 (Source: TADInfo database, NCAH).....	39
Annexure 21: Details of HPAI outbreaks in the country (2012-2015) (Source: TADInfo database, NCAH).....	39

Annexure 22: Details of Highly Pathogenic Avian Influenza outbreaks during 2016 (Source: TADInfo database, NCAH).	40
Annexure 23: Details of Classical Swine Fever outbreaks in the country (2012-2015) (Source: TADInfo database, NCAH).	40
Annexure 24: Details of Classical Swine Fever outbreaks during 2016 (Source: TADInfo database, NCAH).	40
Annexure 25: Details of PPR outbreaks in the country (2010-2015) (Source: TADInfo database, NCAH).	40
Annexure 26: Details of PPR outbreaks during 2016 (Source: TADInfo database, NCAH).	41
Annexure 27: Details of vaccine procured and distributed to various dzongkhags and central units for disease prevention and control during FY 2016-17(Source: BPU, NCAH).	41
Annexure 21: Laboratory diagnostic capacity at LSU, NCAH, Serbithang	42

1. INTRODUCTION

Notifiable disease means a disease listed by the Veterinary Administration in the country, and that, as soon as detected or suspected, must be reported to any of the animal health service Centres by the fastest means of communication to contain the disease. Outbreaks of notifiable diseases have been reported every year from different parts of the country. This report presents a brief descriptive analysis of the status of reported notifiable animal diseases in the country during 2017 (Jan-Dec 2017) and the trend of outbreaks since 1996. The data used for this analysis were retrieved from the Veterinary Information System database (VIS) for the period from 1996 to 2010 and the online Transboundary Animal Disease Information System (TADinfo database) for the period 2011–2017 and were validated accordingly. The information in this report can be used as baseline data in future.

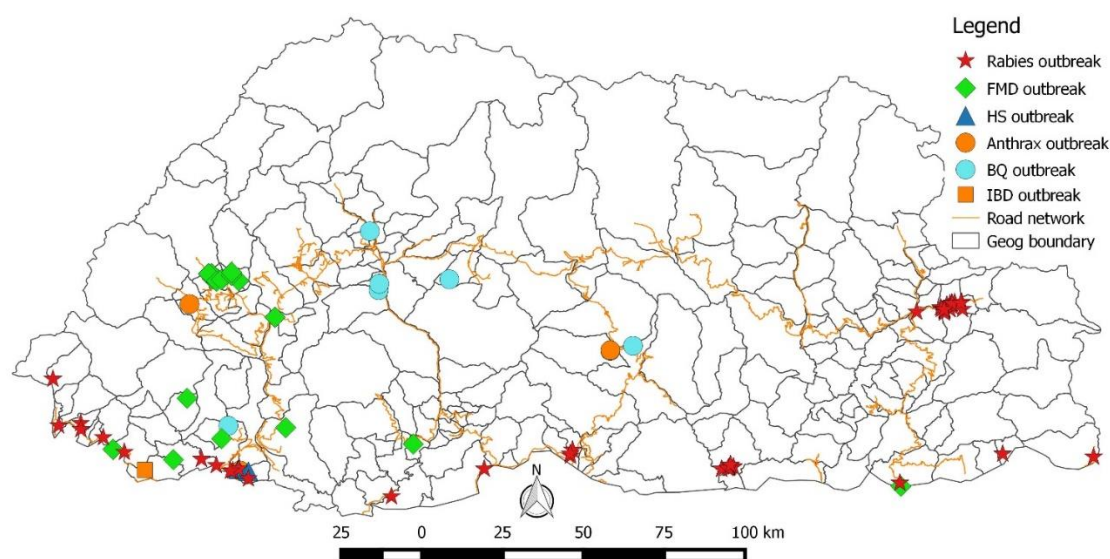


Figure 1: Distribution of reported outbreaks of notifiable animal diseases in Bhutan during 2017

During 2017, rabies was the major disease that occurred in Tashigang, Panbang, Samtse, Sarpang, Samdrup Jongkhar and Chukha dzongkhags as a result of incursion from the bordering town due to movement of rabid dogs. For the first time, a major rabies outbreak also occurred in Panbang town and nearby villages under Zhemgang dzongkhag. FMD outbreak occurred in Paro dzongkhag affecting 764 cattle including 33 deaths. The details of each specific disease is presented in the following respective section.

2. MULTIPLE SPECIES DISEASES

2.1. Foot and mouth disease

Foot-and-mouth disease (FMD) is a highly infectious viral disease of cloven-hoofed species characterized by fever and development of vesicles in the mouth and on the muzzle, teats, and feet. In a susceptible population, morbidity approaches 100% but the disease is rarely fatal except in young and very old animals.

FMD is endemic and is reported from almost all parts of the country. Serotype O is the principal FMDV serotype involved in Bhutan, consistent with the disease epidemiology in the neighboring countries in the region. Serotype O was confirmed in all the outbreaks during 2017. In addition, serotype A was detected in a private piggery farm at Dagapela. The virus could have been transmitted from the kitchen waste while feeding pigs since the owner own a meat shop in the dzongkhag. Serotype A was also detected in the imported cattle at Samdrup Jongkhar quarantine station. This has huge implication in terms of introduction of new serotypes/strains of FMDV into the country.

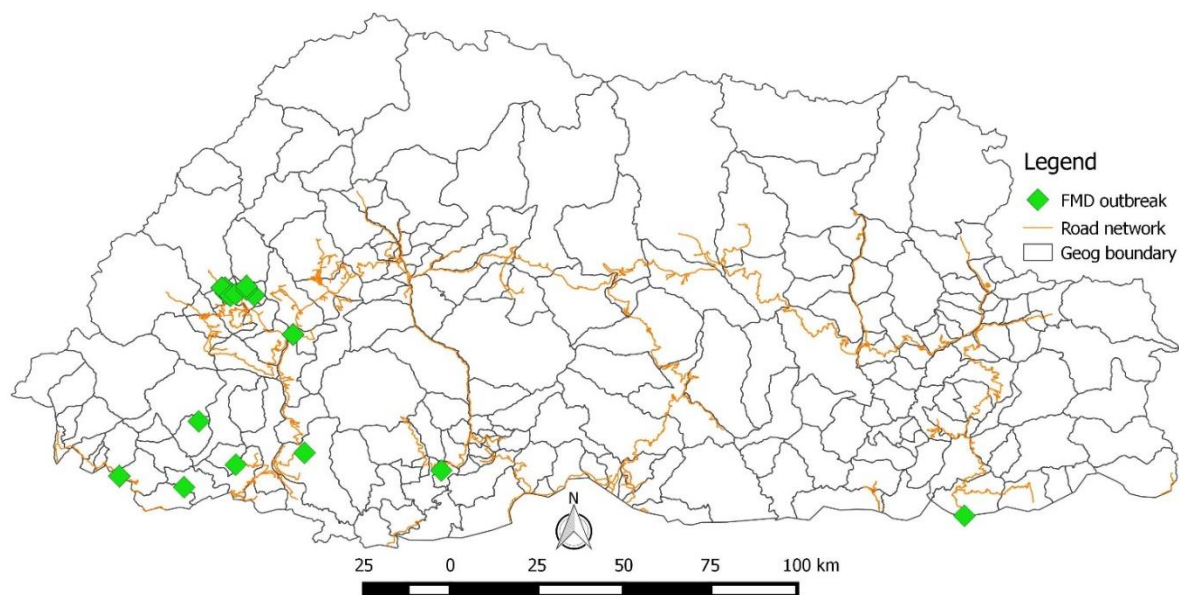


Figure 2: Distribution of FMD outbreaks in animals between January and December 2017

During 2017, nine outbreaks of FMD were reported in seven dzongkhags (Samtse, Chukha, Paro, Dagana, Thimphu and Samdrup Jongkhar) when compared to 14 reported outbreaks in 2016.

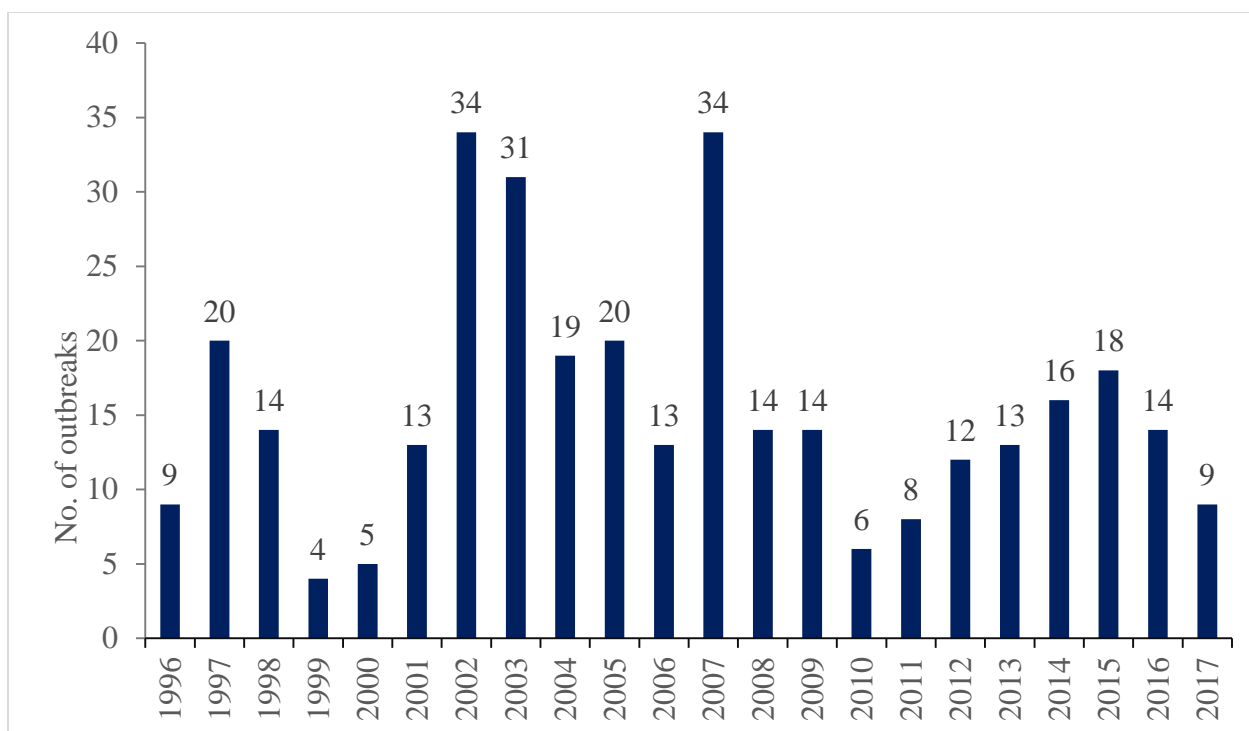


Figure 3: Annual distribution of reported FMD outbreaks in Bhutan (1996 to 2017)

However, major FMD outbreak in severe form had occurred in Paro dzongkhag affecting 764 cattle including 33 deaths, and were associated with migration of infected animals and low vaccination coverage in Paro dzongkhag.

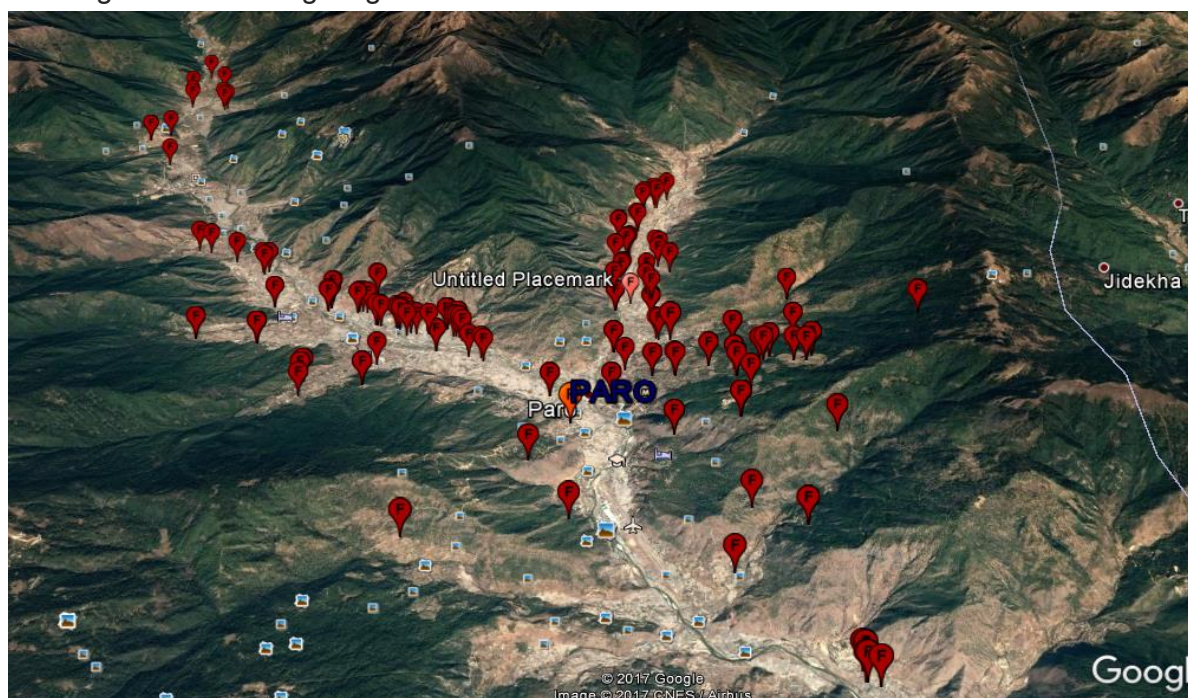


Figure 4: Distribution of FMD outbreak in Paro (June-August 2017) (Source: Drs. Chendu and Kinley)

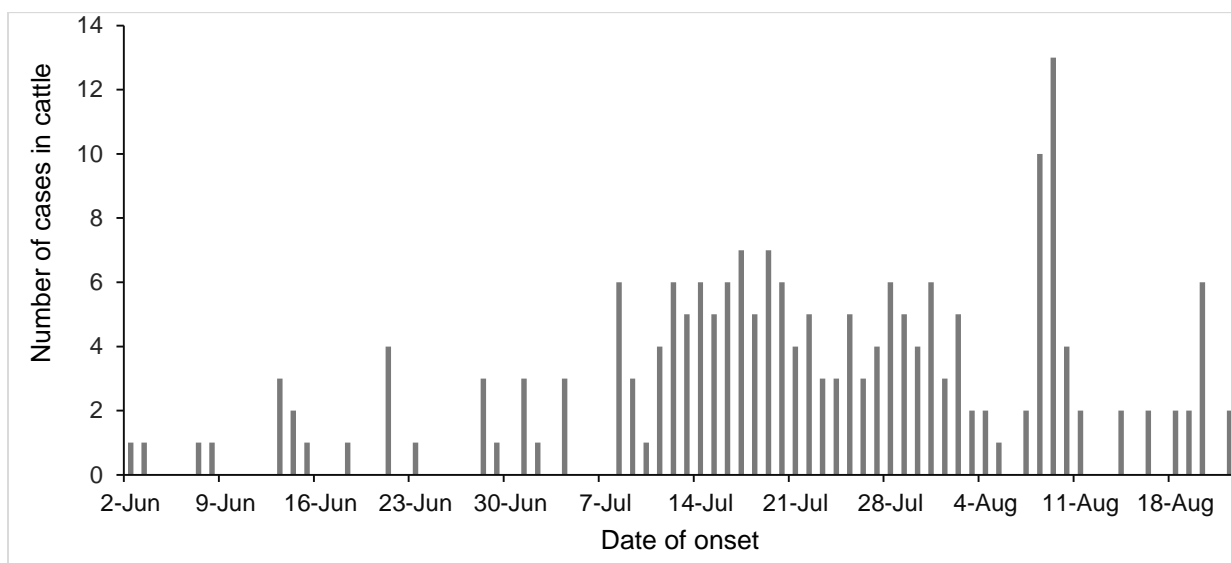


Figure 5: Epidemic curve of FMD outbreak in Paro (Source: Drs. Chendu and Kinley)

A Progressive Control Pathway (PCP) approach for control of FMD is being implemented in the country with an ultimate objective to enable Bhutan reach Stage 3 of the PCP by the year 2020.

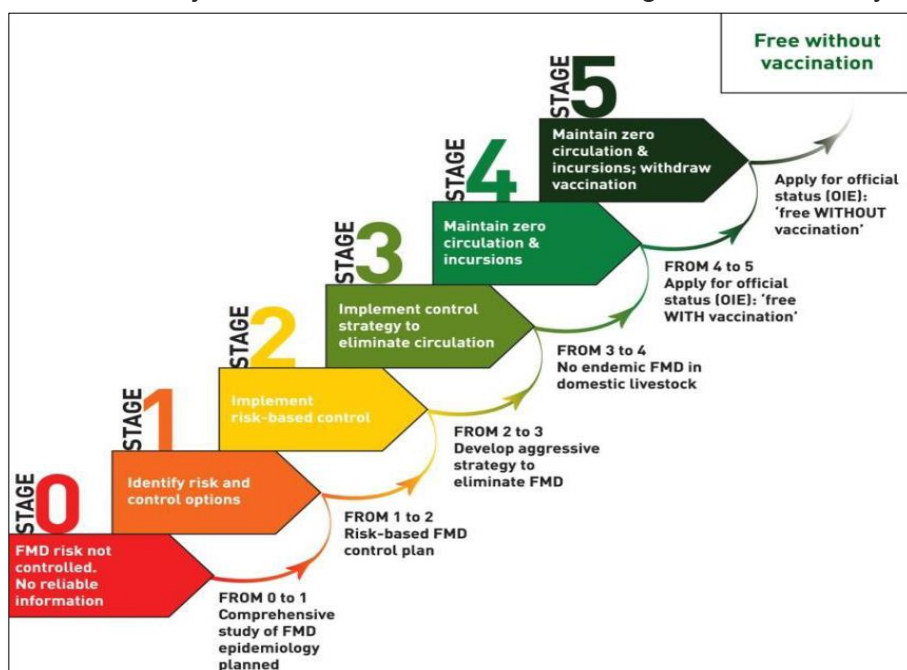


Figure 6: Progressive control pathway for FMD

Table 1: Time frame to achieve stage 3 of PCP in Bhutan as per Figure 6

Year	2012	2013	2014	2015	2016	2017	2018	2019	2020
Stage of PCP	1	1	1	1	2	2	2	2	3

Those herds/villages that have implemented bi-annual vaccination with more than 70% coverage have not reported any outbreaks of FMD in animals (e.g. Chukha and Sarpang Dzongkhag). Chukha Dzongkhag which has traditionally been the hub for FMD has been seeing a gradual reduction in the incidences because of the stringent bi-annual vaccination undertaken through coordination between Dzongkhag Livestock Sector, Chukha, NCAH and RLDC Tsimasham. Between 2007 and 2016 (financial year), the Biological Production Unit of National Centre for Animal Health, Serbithang had distributed an average of 21, 2576 doses of FMD vaccine to 20 dzongkhags annually for mass vaccination program.

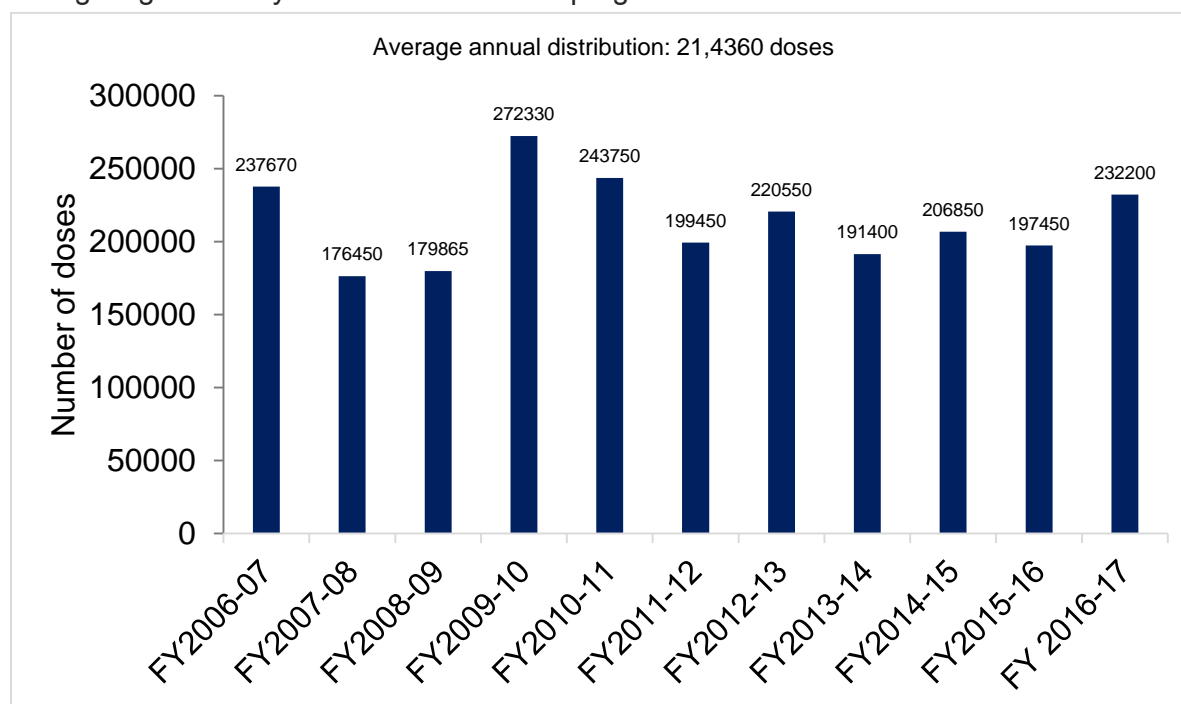


Figure 7: Number of FMD vaccine doses distributed to 20 Dzongkhags (FY 2007-2017)

2.2. Rabies

Rabies is a fatal zoonotic disease transmitted mainly by the bite of rabid animals, predominantly domestic dogs. Rabies was present in most parts of Bhutan until the early 1990s but has been controlled now. Currently the disease is endemic in the southern dzongkhags of Bhutan along the border with India. However, there has been sporadic outbreaks in the interior Bhutan as a result of spread from the south Bhutan areas and incursion, indicating possible re-emergence if strategic control program is not implemented.

During 2017, 20 outbreaks of rabies were reported in Tashigang, Samtse, Samdrup Jongkhar,

Sarpang, Chukha and Zhemgang dzongkhags when compared to 25 outbreaks in 2016.

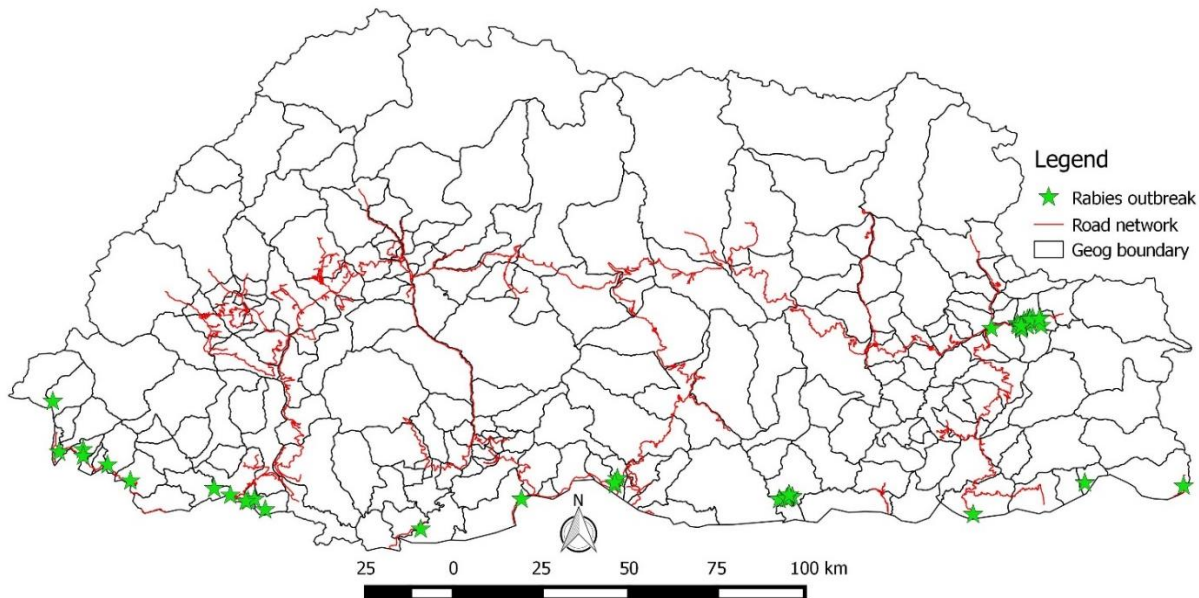


Figure 8: Distribution of rabies outbreaks in animals between January & December 2017

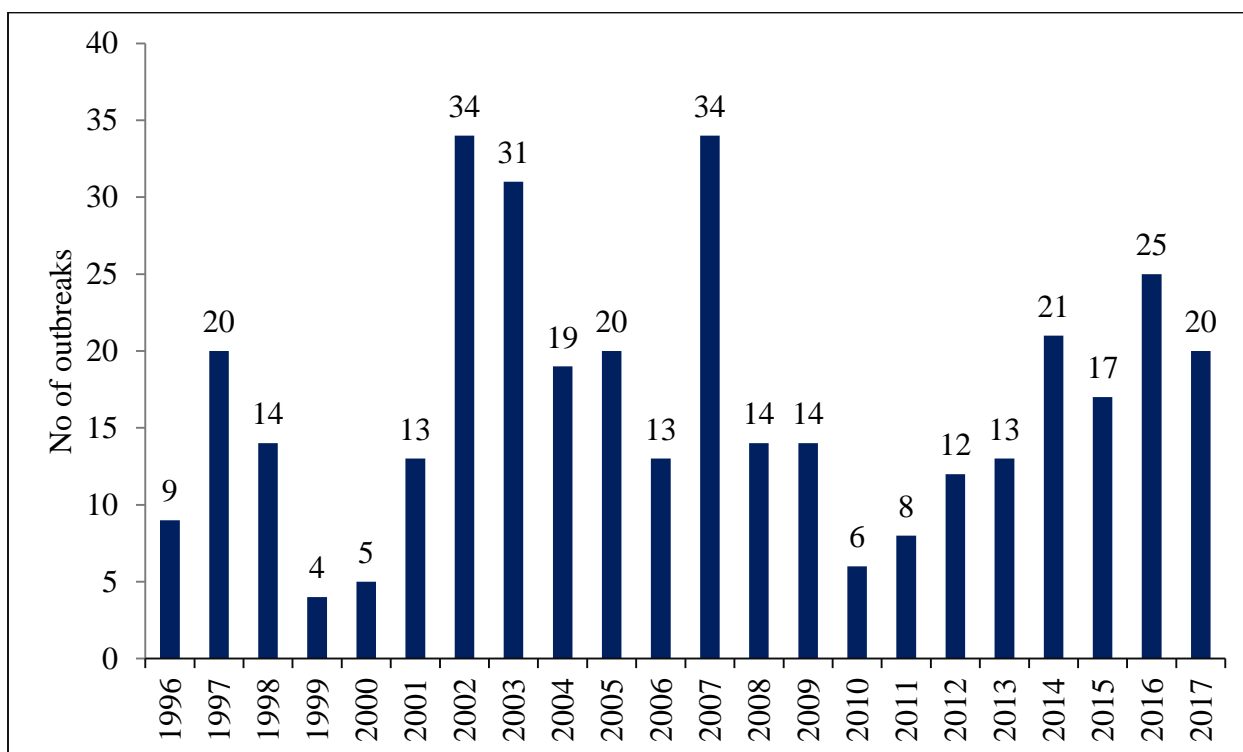


Figure 9: Annual distribution of Rabies outbreak in Bhutan (1996 to 2017)

The year saw emergence of rabies and incursion into rabies-free areas. For instance, there were incursion of rabies in Panbang area under Zhemgang dzongkhag during September 2017. Movement of rabid dog from the bordering town could have been associated with the transmission

and spread of rabies in Panbang and was finally controlled by the end of October 2017 through implementation of response activities by the Rapid Response Team. Team from NCAH, Thimphu have visited the outbreak area on 4th October 2017 and coordinated selective removal of suspected and in-contact stray dogs.

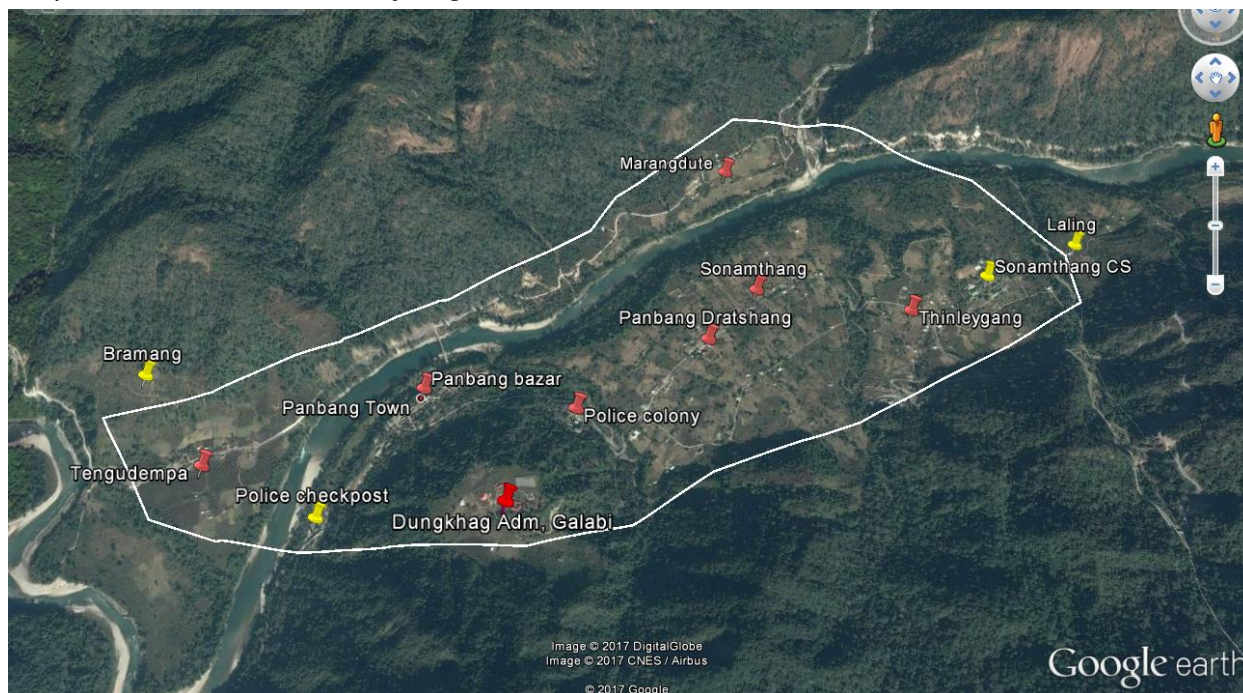


Figure 10: Rabies outbreak location in Panbang town, Sep-Oct 2017

The year also reported continual spread of rabies in Trashigang following detection of first case of rabies in Merak geog in a stray dog on 29 July 2016. The disease eventually spread to various places under Shongphu, Radi and Samkhar geogs including Trashigang town. The outbreak was finally controlled in June 2017 through implementation of rapid response activities including mass dog vaccination and selective removal of suspected and in-contact dogs by the RRT comprising of officials from RLDC Khangma, Dzongkhag Livestock Sector Trashigang and NCAH, Thimphu.



Figure 11: View of Rangjung town, Trashigang and surrounding villages where rabies outbreak

was reported

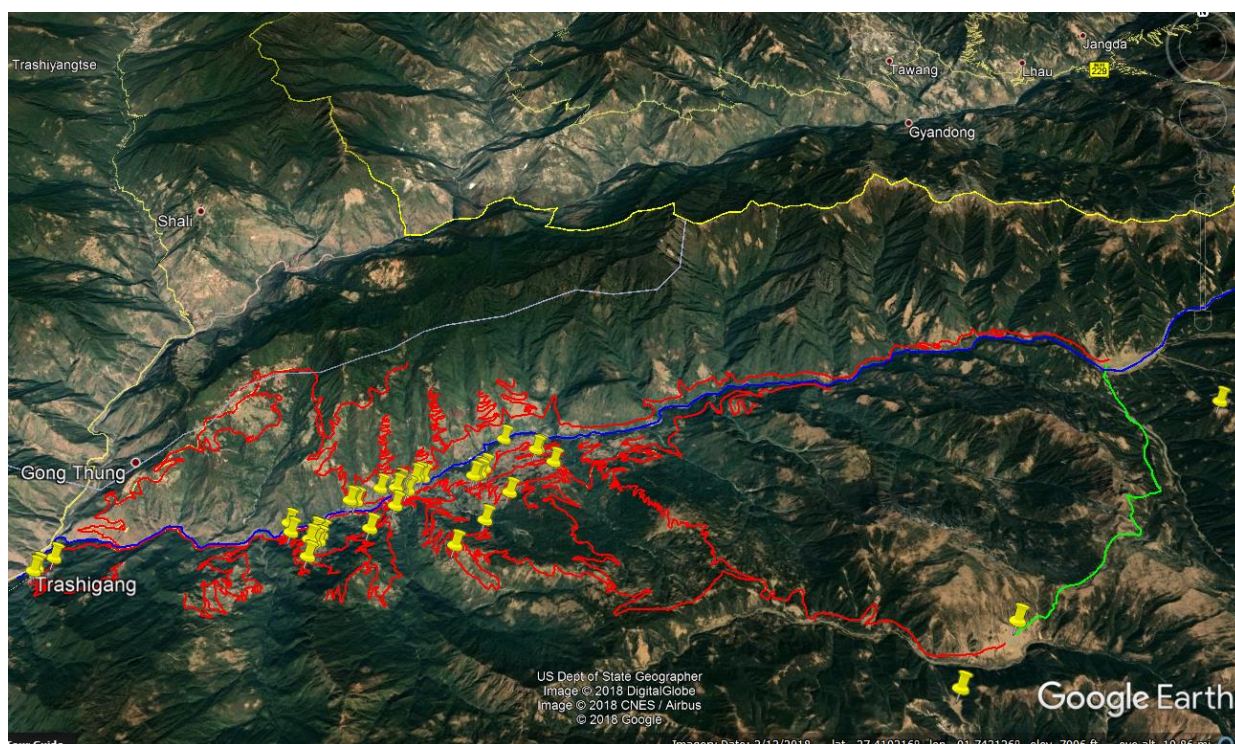


Figure 12: Spatial distribution of rabies outbreak in Trashigang (yellow pin) and red line is the farm road network

For the first time, rabies cases in a dog and bull was also reported at Samrang village in Samdrup Jongkhar and Tendu village in Samtse. Although, both of these area are nearer to Indian border village/towns, rabies outbreak were not reported previously in these villages. In humans, 17 deaths due to rabies had been reported between 2006 and 2016 with only one death in 2016. No human rabies cases were reported during 2014, 2015 and 2017.

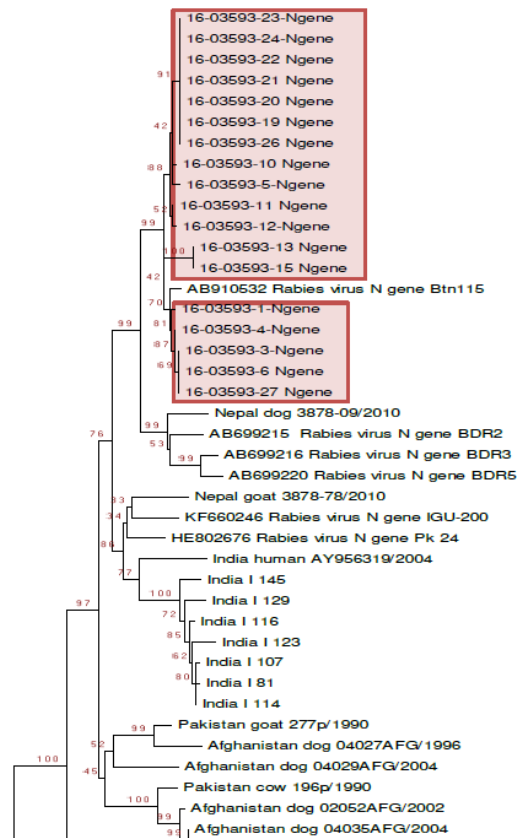


Figure 13: Phylogenetic analysis of rabies virus

Phylogenetic analysis of rabies virus based on N gene indicate that Bhutan viruses belong to the Arctic-related clade which is widely circulating in northern India (Tenzin et al., 2011).

2.3. Anthrax

Anthrax is a serious zoonotic disease caused by the spore forming bacterium *Bacillus anthracis*. Anthrax commonly presents as an acute septicemia with a high fatality rate in herbivore animals. The most common signs are sudden death, discharge of un-clotted tarry blood from natural orifices, rapid bloating and absence of rigor mortis.

In Bhutan, anthrax cases are sporadically reported in domestic animal, primarily in cattle. Occasionally, cutaneous anthrax cases have been reported in humans following contact with infected animals. During 2017 three outbreaks were reported in Haa, Sampheling and Korphu village in Trongsa when compared to two outbreak reported from Dagana and Samtse dzongkhags during 2016. No human cases were reported during 2017.

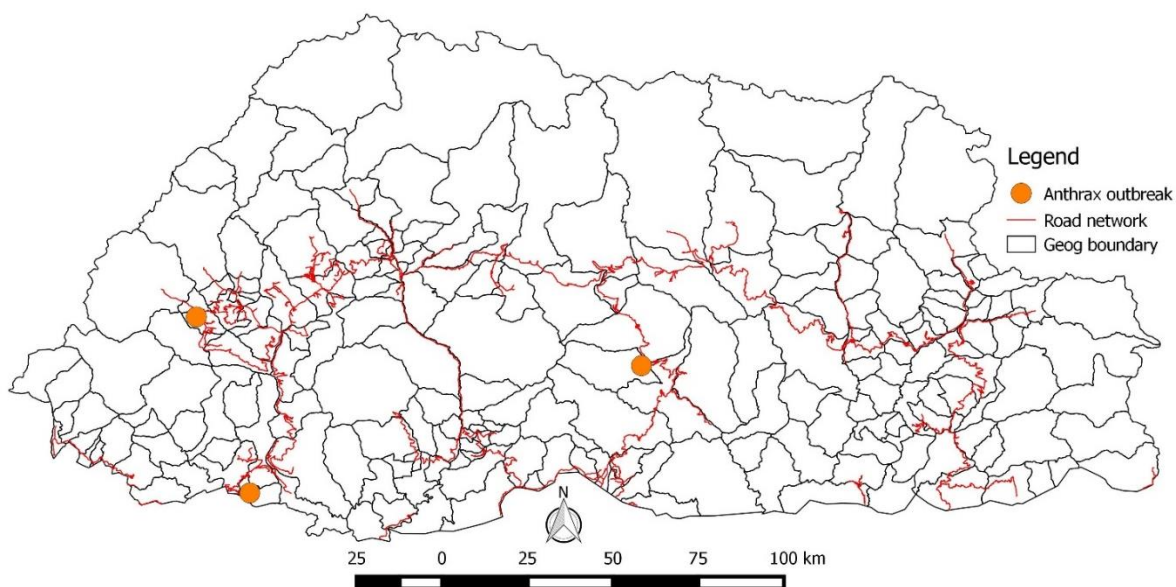


Figure 14: Distribution of reported anthrax outbreaks in animals between January & December 2017

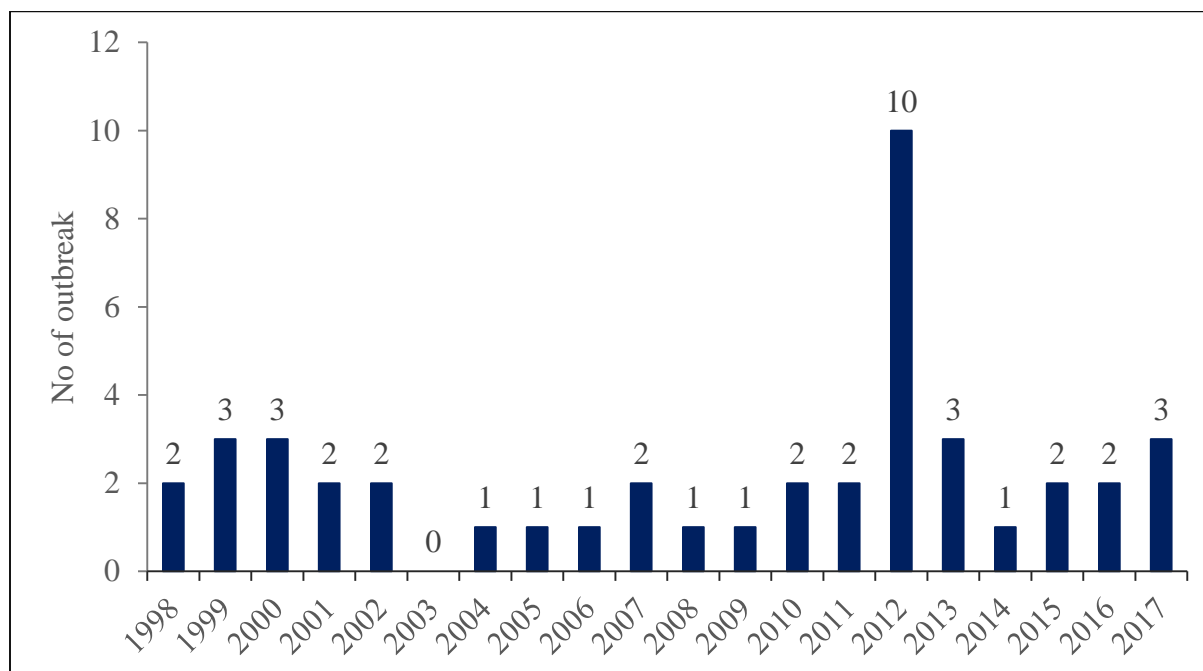


Figure 15: Annual distribution of Anthrax outbreak in Bhutan (1998 - 2017)

3. DISEASES IN CATTLE

3.1. Black Quarter

Black Quarter (BQ) is an acute, febrile disease of cattle and sheep caused by *Clostridium*

chauvoei and characterized by emphysematous swelling, usually in the heavy muscles. Spores of *Clostridium chauvoei* can remain viable in the soil for many years and the animal gets infection through ingestion of the organisms.

During 2017, six outbreaks of BQ were reported from five dzongkhags (Chukha, Trongsa, Punakha, Wangdue and Zhemgang) when compared to seven outbreaks reported during 2016. BQ outbreaks have been reported throughout the year without much seasonal variation.

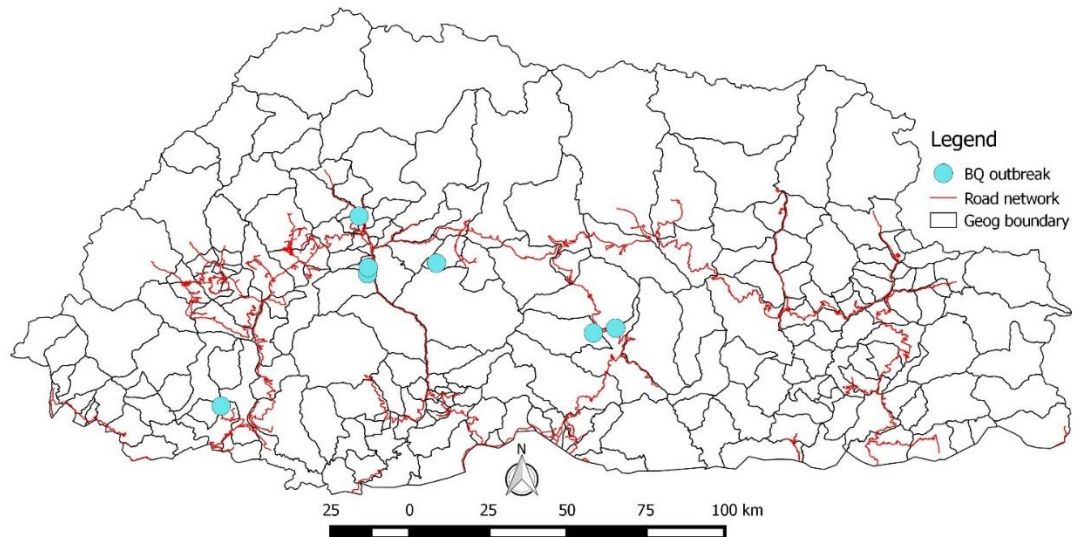


Figure 16: Distribution of reported BQ outbreaks in animals between January & December 2017

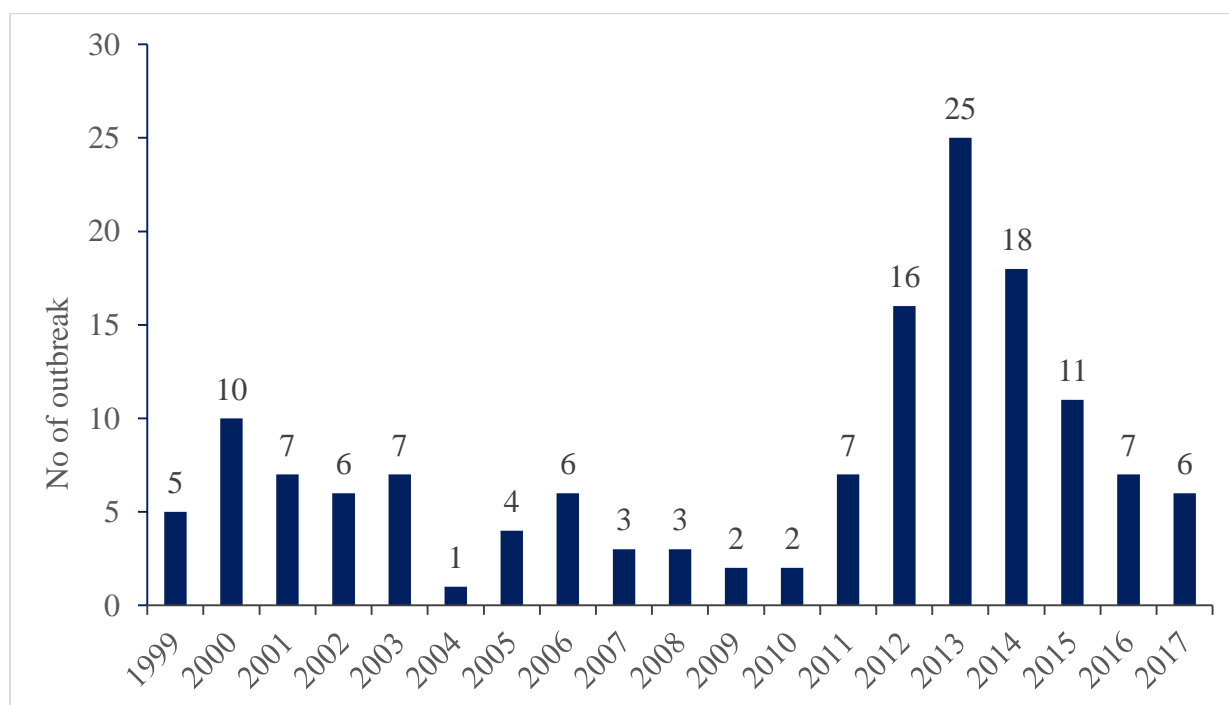


Figure 17: Annual distribution of Black Quarter outbreak in Bhutan (1999 to 2017)

3.2. Hemorrhagic Septicemia

Hemorrhagic septicemia (HS) is an acute, highly fatal disease of cattle caused by particular serotypes of *Pasteurella multocida*. Although HS may be seen at any time of year, it occurs commonly during the rainy season due to stress created by adverse environmental conditions. The disease can be prevented by vaccination. HS is sporadically reported in cattle every year. A total of 22 outbreaks have been reported between 1998 and 2014 with a report of 215 cases and 130 deaths of cattle

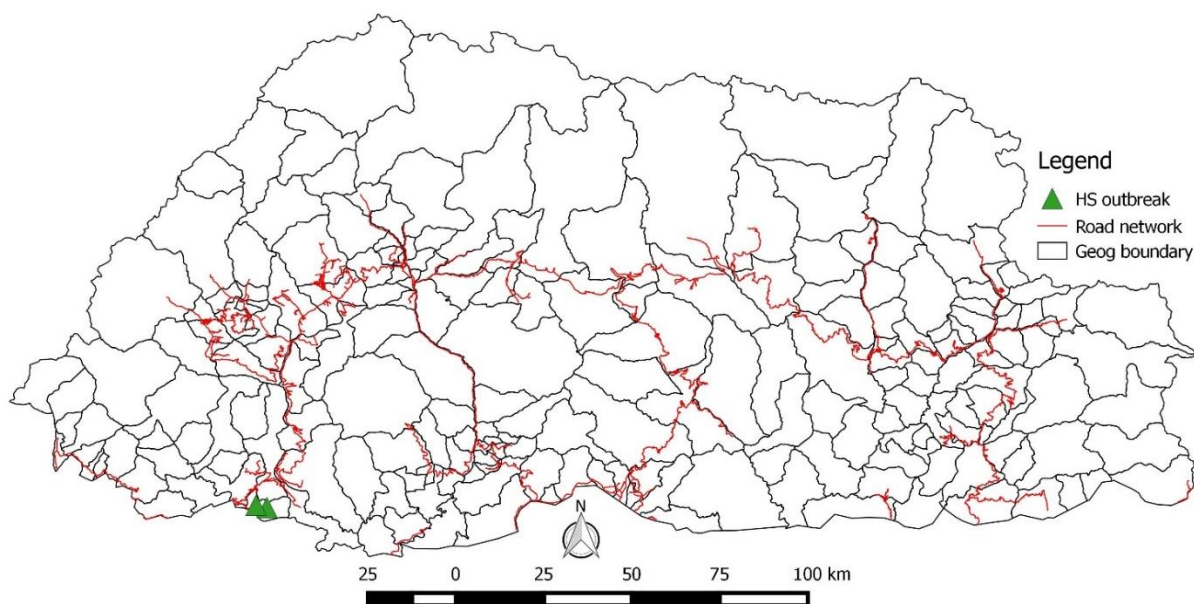


Figure 18: Distribution of reported HS outbreaks from January & December 2017

In 2017, two outbreaks of HS were reported from Chukha dzongkhag when compared to reports of seven outbreak during 2016.

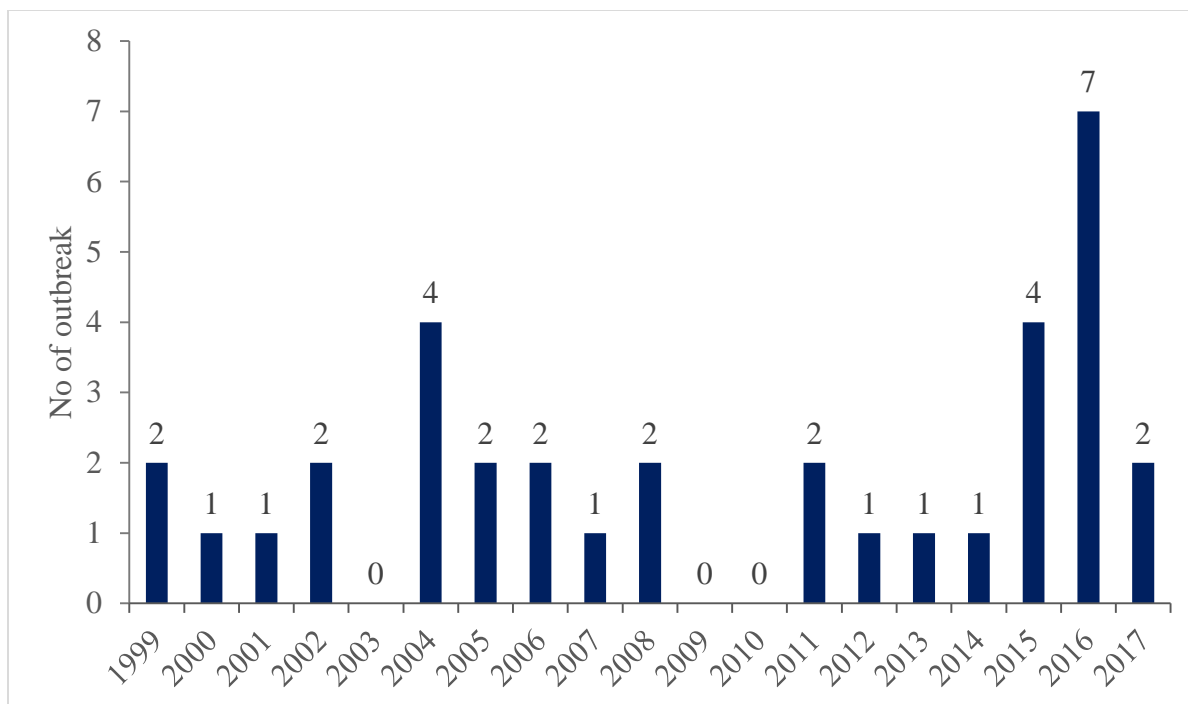


Figure 19: Annual distribution of Hemorrhagic Septicemia outbreaks in Bhutan 1999 to 2017)

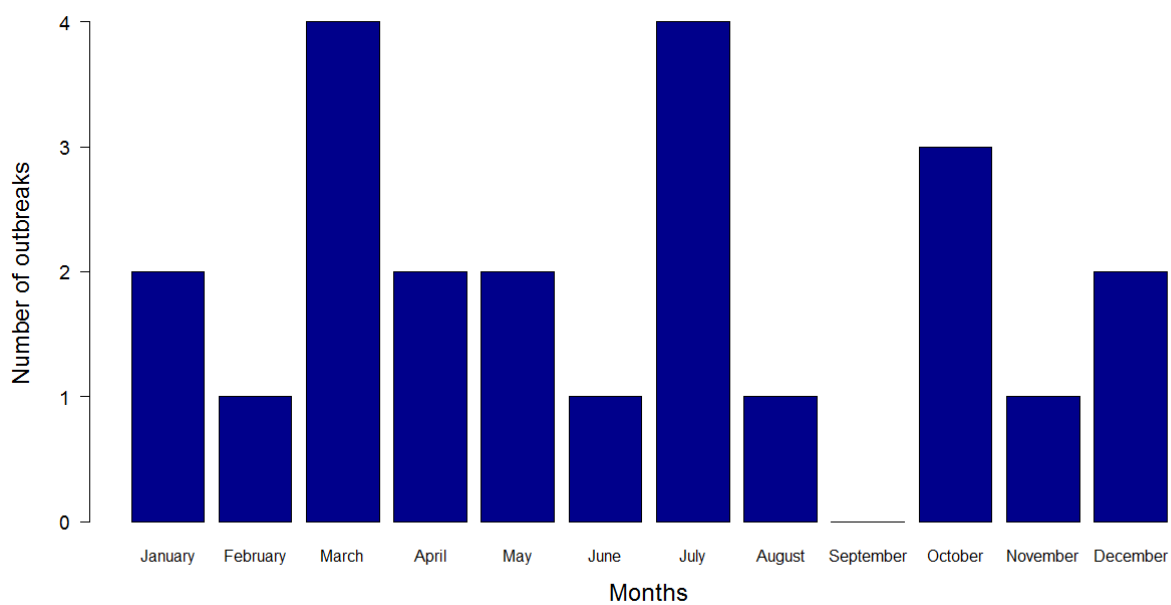


Figure 20: Monthly pattern of HS outbreaks in cattle in Bhutan, 1999 to 2017)

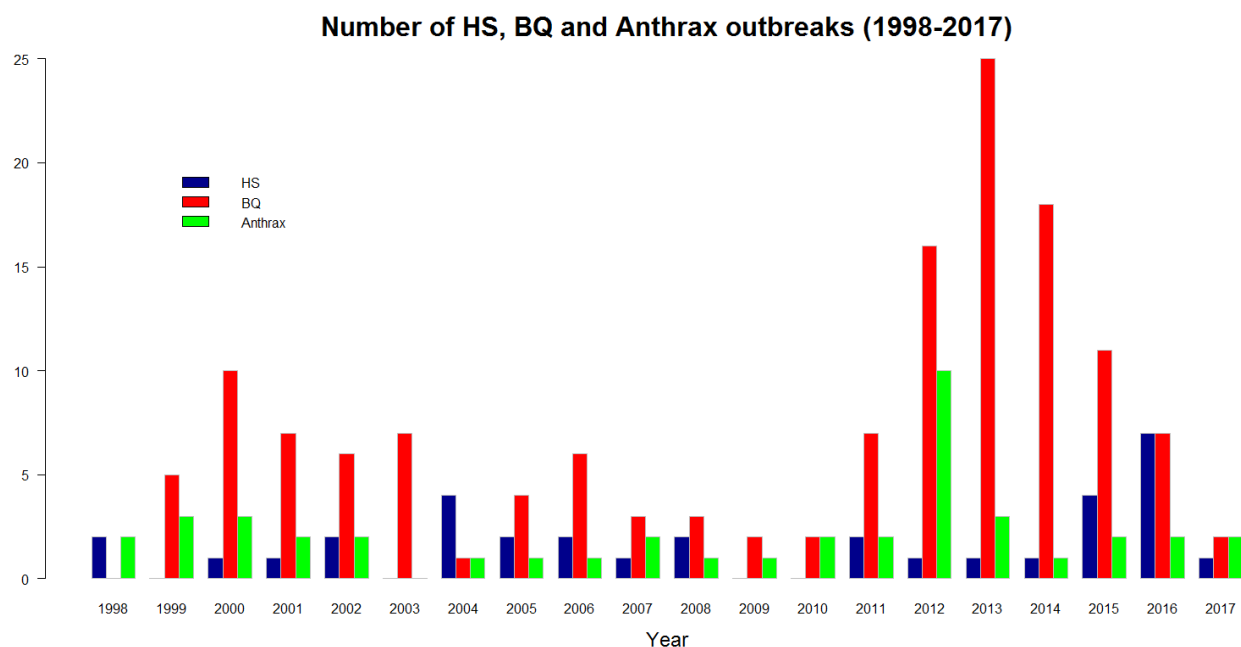


Figure 21: Annual distribution of HS, BQ and anthrax outbreaks in animals in Bhutan 1999 to 2017)

Annual average distribution: **78,976 doses**

Estimated cost per year for HS/BQ vaccine: Nu.0.6 million (US\$ 9500)

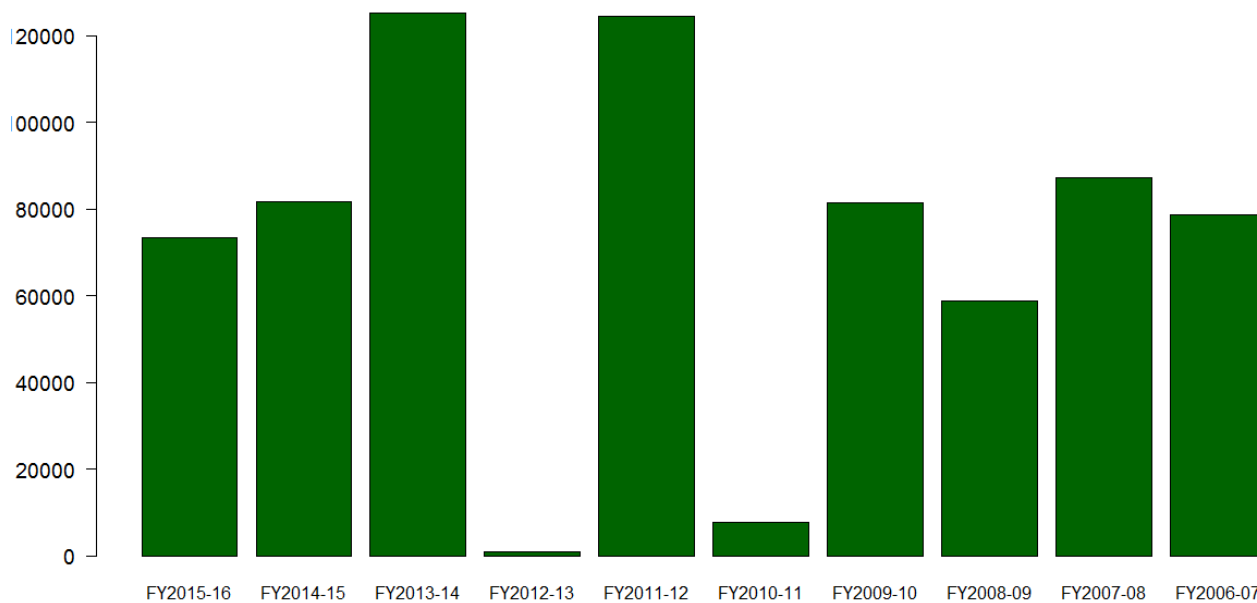


Figure 22: Annual distribution of HS/BQ vaccine in Bhutan (FY 2006-2016)

3.3. Brucellosis

Brucellosis is a bacterial zoonotic disease. An outbreak of brucellosis occurred at NJBC farm, Samtse in 2015 and was introduced through imported animal. In 2017, few animals were moved to CRC Wangkha and of the 81 animals tested, 11 were found to be seropositive against brucellosis. Brucellosis seropositive cases were also detected in the imported animals at the quarantine station of Gelephu and Samdrup Jongkhar. Those seropositive cases were returned back to the source of origin. Nationwide brucellosis surveillance was completed in 2017 and the laboratory test is awaiting. The finding from this study will guide policy decision on brucellosis prevention and control programme in the country.

4. DISEASES IN POULTRY

4.1. Infectious Bursal Disease

Infectious Bursal Disease (IBD) or Gumboro disease is a highly contagious and infectious disease of poultry. The target organ of the virus is the *Bursa of fabricius*, an important organ in the chickens for developing immune system.

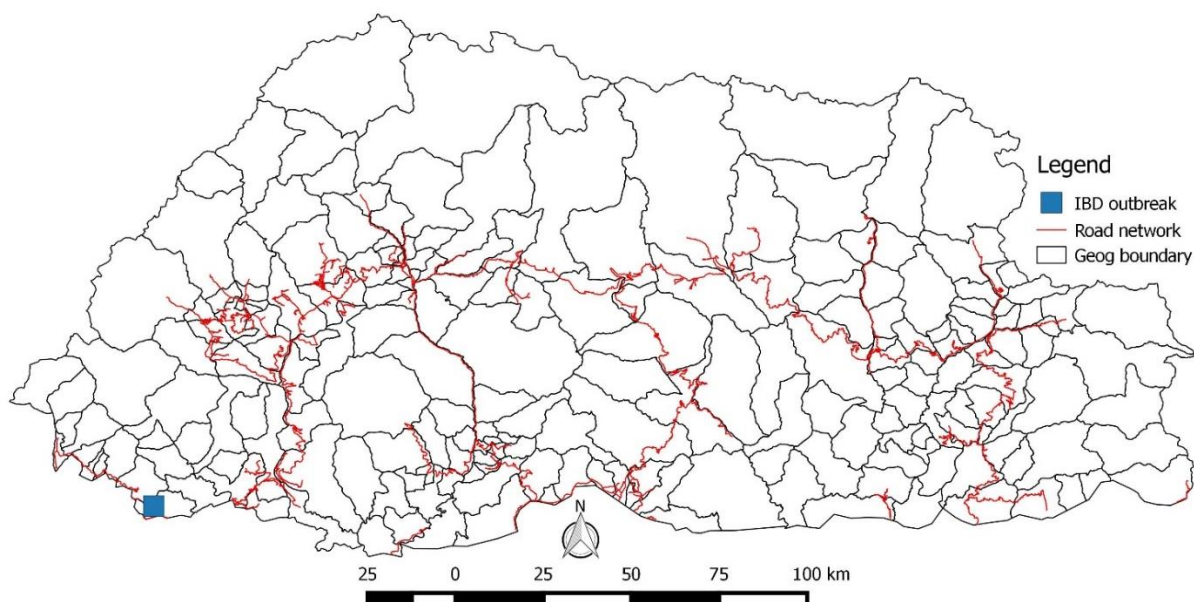


Figure 23: Distribution of reported IBD outbreaks between January & December 2016

During 2017, only one outbreak of IBD was reported from Samtse compared to six outbreaks during 2016. However, the incidence of IBD has decreased after NCAH changed the vaccine and vaccination schedule.

4.2. Avian Leucosis Complex

Avian Leucosis Complex was detected in a native poultry birds at Dechencholing, Thimphu. ALC is a highly contagious viral infection caused by retrovirus and the infected birds become shedders and life-long carrier. The virus is vertically transmitted through light albumin of egg. Therefore, hatchery will be infected and then to next generation stock affecting the entire production chain. ALC outbreak occurred at Regional Poultry Breeding Centre, Khangkhu, Paro during 2016.

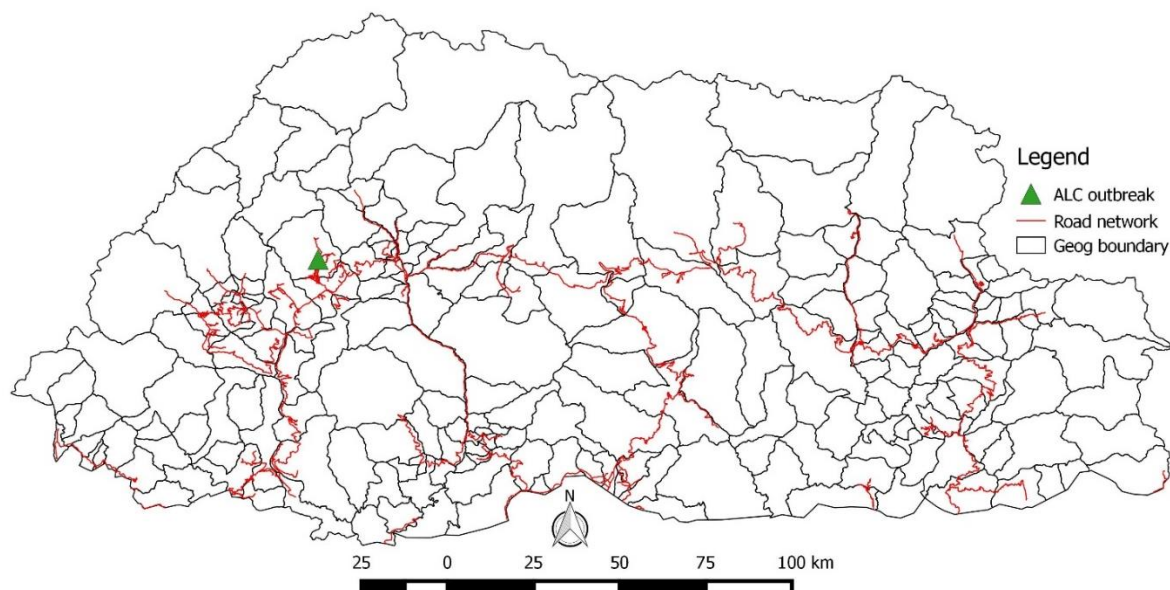


Figure 21: Distribution of reported ALC outbreaks between January & December 2017

5. DISEASE IN PIGS

5.1. Classical Swine fever

Classical swine fever (CSF) is a contagious febrile disease of pigs caused by Pestivirus, family flaviviridae. The main source of infection is the pig—either live animals (movement of infected pigs) or through illegally imported pig meat and meat products that find their way into the porcine food chain through the feeding of waste food (e.g., Swill feeding).

Only sporadic cases of CSF are reported in village pigs in Bhutan. Although CSF vaccine is available, vaccination has been very limited due to practical field difficulties in the village pigs. However, pigs in the government farms are regularly vaccinated and the piglet distribution to the farmers are done after vaccination at the farms. During 2017, only two outbreak of swine fever was reported from Paro and Gelephu.

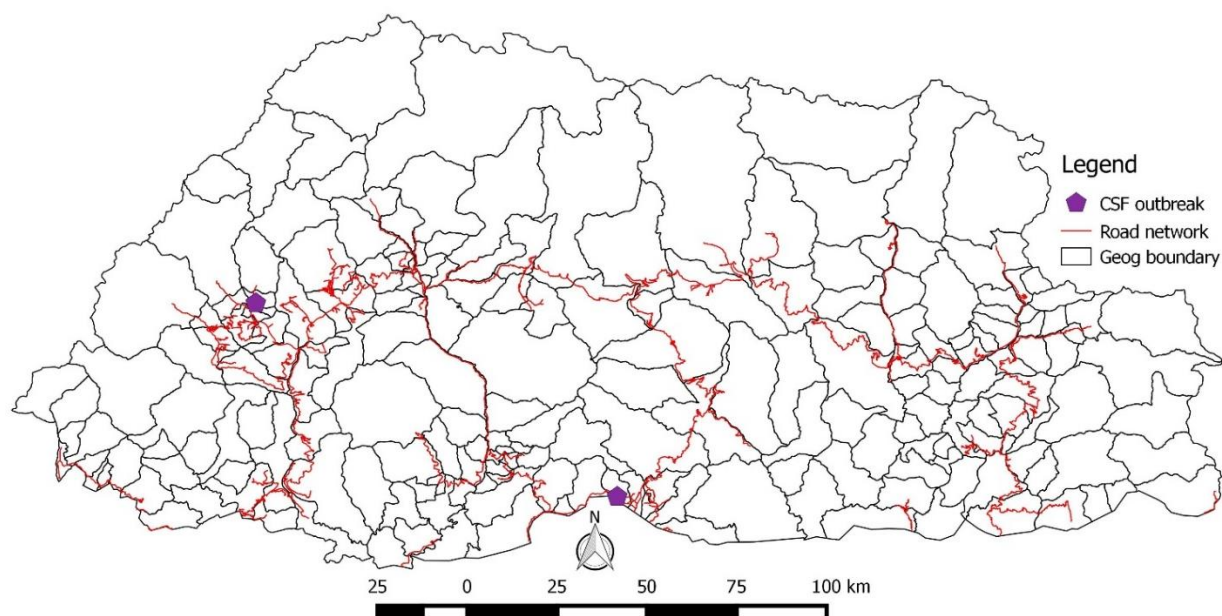


Figure 22: Distribution of reported Swine Fever outbreaks between January & December 2017

7. ACKNOWLEDGEMENTS

The National Centre for Animal Health, Serbithang would like to acknowledge all the TADInfo focal points at Regional Livestock Development Centres, Satellite Veterinary Laboratories and Dzongkhag Veterinary Hospitals for their reporting and updating the disease outbreaks into TADInfo online database system.

8. REFERENCES

1. Animal Health Bulletin 2010, National Centre for Animal Health, Serbithang, Bhutan
2. Livestock Rules and Regulation of Bhutan 2008, Ministry of Agriculture, Thimphu, Bhutan
3. Dukpa, K., Robertson, I.D., Edwards, J.R., Ellis, T.M., Tshering, P., Rinzin, K. and Dahal, N. (2011) Risk factors for foot-and-mouth disease in sedentary livestock herds in selected villages in four regions of Bhutan. *New Zealand Veterinary Journal* 59 (2), 51-58.
4. Dukpa, K., Robertson, I.D., Edwards, J. and Ellis, T.M. (2011) A retrospective study on the epidemiology of foot-and-mouth disease in Bhutan. *Tropical Animal Health and Production*, 43 (2), 495-502.
5. Dubey, SC., Dahal, N., Nagarajan, S., Tosh C, Murugkar HV, Rinzin K, Sharma B, Jain R, Katare M, Patil S, Khandia R, Syed Z, Tripathi S, Behera P, Kumar M, Kulkarni DD, Krishna

- L. (2012). Isolation and characterization of influenza A virus (subtype H5N1) that caused the first highly pathogenic avian influenza outbreak in chicken in Bhutan. *Veterinary Microbiology*. 155: 100-105.
6. Tenzin., Dhand, N.K., Dorjee, J. and Ward, M.P (2010). Re-emergence of rabies in dogs and other domestic animals in eastern Bhutan, 2005–2007. *Epidemiology and Infection*, 139 : 220–225.
 7. Tenzin., Sharma, B., Dhand, N.K., Timsina, N. and Ward, M.P. (2010). Re-emergence of rabies in Chhukha district, Bhutan, 2008. *Emerging Infectious Diseases*, 16: 1925–1930.
 8. Tenzin., Ward, M.P. and Dhand, N.K. (2012). Epidemiology of rabies in Bhutan: Geographic Information System based analysis. *The Reality of rabies: setting the scene. Compendium of the OIE Global Conference on Rabies Control* (OIE eds).
 9. Tenzin., Dhand, N.K. and Ward, M.P. (2012). Surveillance of animal rabies in Bhutan, 1996 – 2009. *Epidemiologie en sanitaire ananimal*, 59-60, 254–256.
 10. Tenzin and Tshering, P. (2005): Notifiable animal disease situation in Bhutan: Review report, NCAH, Department of Livestock, MoA, and Thimphu.
 11. Tenzin, Kinzang Dukpa, Yeshey Tshering, Lokay Thapa (2012). Status of notifiable animal diseases in Bhutan, 1996–2012. NCAH
 12. Tenzin, Dhand, N.K and Ward, M.P (2011). Patterns of Rabies Occurrence in Bhutan between 1996 and 2009. *Zoonoses Public Health*. 58: 463–471.
 13. Thapa, N.K, Tenzin, Wangdi, K, Dorji, T, Migma, Dorjee, J, Marston, C.K, Hoffmaster, A.R. (2014). Investigation and Control of Anthrax Outbreak at the Human–Animal Interface, Bhutan, 2010. *Emerging Infectious Diseases*, 20: 1524-1526.
 14. Status of Notifiable Animal Diseases in Bhutan 2013, NCAH, Serbithang
 15. Status of Notifiable Animal Diseases in Bhutan 2014, NCAH, Serbithang
 16. Status of Notifiable Animal Diseases in Bhutan 2015, NCAH, Serbithang
 17. Status of Notifiable Animal Diseases in Bhutan 2016, NCAH, Serbithang
 18. National FMD Prevention and Control Plan 2016, NCAH, Serbithang
 19. National Rabies Prevention and Control Plan 2017, NCAH, Serbithang

9. ANNEXURE

Annexure 1: Details of FMD outbreaks in the country (2012-2015) (Source: TADInfo database, NCAH)

Date	Village	Geog	Dzongkhag	Species	Cases	Deaths
27-Jul-12	Titring	Tading	Samtse	Bovine	146	2
17-Aug-12	Thothang	Lauri	S/Jongkhar	Bovine	30	1
29-Aug-12	Richanglo	Gomdar	S/Jongkhar	Bovine	47	1
2-Sep-12	Khelphu	Merak	Trashigang	Bovine	111	12
3-Sep-12	Pusa	Sakteng	Trashigang	Bovine	30	0
4-Sep-12	Gonong	Lauri	S/Jongkhar	Bovine	30	1
7-Sep-12	Borangmang	Sakteng	Trashigang	Bovine	43	0
16-Oct-12	Giri Gaon	Sipsu	Samtse	Bovine	72	1
16-Oct-12	Penjorling A	Sipsu	Samtse	Buffalo	4	
16-Oct-12	Penjorling A	Sipsu	Samtse	Bovine	19	
16-Oct-12	Peljorling B	Sipsu	Samtse	Bovine	119	1
17-Oct-12	Jogimara	Sipsu	Samtse	Bovine	9	
17-Oct-12	Hangay	Sipsu	Samtse	Buffalo	5	
17-Oct-12	Hangay	Sipsu	Samtse	Bovine	55	
17-Oct-12	Hangay	Sipsu	Samtse	Caprine	2	
18-Oct-12	Khelphu	Merak	Trashigang	Bovine	387	3
15-Nov-12	Mujuwa	N/Chhoeling	Samtse	Buffalo	5	
15-Nov-12	Mujuwa	N/Chhoeling	Samtse	Bovine	23	
28-Nov-12	Torsatar	Phuntsholing	Chukha	Bovine	7	0
28-Nov-12	Torsatar	Phuntsholing	Chukha	Swine	2	
28-Nov-12	Dagphel	Nangkor	Zhemgang	Bovine	3	1
27-Dec-12	Jangsa	Ugentse	Samtse	Bovine	12	
7-Jan-13	Jagarthan	Lamgong	Paro	Bovine	6	0
13-Feb-13	Khasadrapchu	Mewang	Thimphu	Bovine	2	0
29-May-13	Bunakha	Chapcha	Chukha	Bovine	10	
6-Jun-13	Phuentsholing	Phuntsholing	Chukha	Bovine	4	
30-Sep-13	Phuentsholing	Phuntsholing	Chukha	Bovine	16	
10-Oct-13	Shebji	Sombeykha	Haa	Bovine/Swine	179	6
18-Nov-13	Dangloe	Lamgong	Paro	Bovine/Swine	6	0
11-Dec-13	Phakpashi	Drepung	Mongar	Bovine	3	0
11-Dec-13	Phakpashi	Drepung	Mongar	Bovine	2	
18-Dec-13	S/Jongkhar	Dewathang	S/Jongkhar	Bovine	13	7
24-Dec-13	Yarpheling	Sengye	Sarpang	Bovine	12	

29-Dec-13	Chaebakha	Nyisho	Wangdue	Bovine	10	
30-Dec-13	Narphung	Jangchhubling	S/Jongkhar	Bovine	2	0
30-Dec-13	Labarbotay	Chargharey	Samtse	Bovine	5	0
8-Jan-14	Gebjakha	Lungnyi	Paro	Bovine	3	1
23-Jan-14	Pang Gomo	Lingmukha	Punakha	Bovine	29	
28-Jan-14	Tongchen	Yangtse	T/ Yangtse	Bovine	28	
3-Feb-14	Geptoe	Wangchang	Paro	Bovine	1	0
10-Feb-14	Paga Gempa	Chapcha	Chukha	Bovine	1	
23-Feb-14	Gelekha	Nyisho	Wangdue	Bovine	20	
25-Feb-14	Jakar Kha	Chhokhor	Bumthang	Bovine	41	
31-Mar-14	Chuzom	Dogar	Paro	Bovine	29	0
4-Apr-14	Juka	Doteng	Paro	Swine	6	0
7-Apr-14	Dekha	Shaba	Paro	Bovine	1	0
30-Apr-14	Zor,ChhemaDung	Yalang	T/ Yangtse	Bovine	27	2
16-Jun-14	Hilley	Samrang	S/Jongkhar	Bovine	8	
14-Jul-14	Domphu	Dewathang	S/Jongkhar	Bovine	7	
2-Sep-14	Drugyel school	Tsento	Paro	Bovine	3	0
14-Oct-14	Gobja	Dangchu	Wangdue	Bovine	14	
23-Oct-14	Gebjakha	Lungnyi	Paro	Bovine	14	0
5-Feb-15	Nagakha	Chhubu	Punakha	Bovine	32	0
4-Mar-15	Changyul	Guma	Punakha	Bovine	13	0
15-May-15	Taraythang	Taraythang	Sarpang	Bovine	6	0
12-Jun-15	Dangling	Umling	Sarpang	Bovine/Ovine	29	0
27-Jul-15	Ugyen choling	Tang	Bumthang	Bovine	94	3
12-Aug-15	Radi	Shingkhar	Zhemgang	Bovine	65	1
10-Sep-15	Tangsibi	Ura	Bumthang	Bovine	200	0
13-Sep-15	Bardo	Bardo	Zhemgang	Bovine	40	0
5-Oct-15	Toktogom	Bongo	Chukha	Bovine	4	0
6-Nov-15	Bapalathang	Chhokhor	Bumthang	Bovine	40	0
6-Nov-15	Yumchen	Jarey	Lhuentse	Bovine	28	1
14-Nov-15	Khuling	Tsamang	Mongar	Bovine	47	0
19-Nov-15	Duinmang	Nangkor	Zhemgang	Bovine	3	0
24-Nov-15	Tsenjebi	Saleng	Mongar	Bovine	73	0
24-Nov-15	Phungyang	Yalang	T/ Yangtse	Bovine	4	0
27-Dec-15	Shingkhey	Gasetshowom	Wangdue	Bovine	62	0
28-Dec-15	Geptoe	Wangchang	Paro	Bovine	17	0
28-Dec-15	Chazam	Shaba	Paro	Bovine	6	0

Annexure 2: Details of FMD outbreaks during 2016 (Source: TADInfo database, NCAH)

Date	Village	Geog	Dzongkhag	Species	Cases	Deaths	Outbreak
9/2/2016	Samdzong	Deothang	S/Jongkhar	Bovine	29	0	1
11/2/2016	Bukey	Samtse	Samtse	Bovine	13	0	1
13/2/2016	Shegeoan	Chapcha	Chukha	Bovine	14	0	1
15/2/2016	Nemjo Pel	Lungnyi	Paro	Bovine	1	0	1
17/2/2016	Titring	Tading	Samtse	Bovine	9	0	1
26/2/2016	Jitti'B'	Chargharey	Samtse	Bovine	7	0	1
5/3/2016	Damchekha	Lokchina	Chukha	Bovine	38	0	1
5/3/2016	Boteykharka	Ugentse	Samtse	Bovine	11	0	1
23/3/2016	Tshocheykha	Genye	Thimphu	Bovine	5	0	1
1/4/2016	Shinkhey	GaseTshowom	Wangdue	Bovine	30	0	1
13/4/2016	Bichgaon	Nichula	Dagana	Bovine	9	0	1
22/5/2016	Tsebj	Naja	Paro	Bovine	4	0	1
28/5/2016	Tsebj	Naja	Paro	Bovine	3	0	0
31/5/2016	Tsebj	Naja	Paro	Bovine	1	0	0
1/6/2016	Pana 'C'	Samphelling	Chukha	Bovine	24	0	1
2/6/2016	Singu	Naja	Paro	Bovine	3	0	0
6/6/2016	Naja	Naja	Paro	Bovine	5	0	0
6/6/2016	Singu	Naja	Paro	Bovine	5	0	0
7/6/2016	Tsebj	Naja	Paro	Bovine	1	0	0
14/7/2016	Golanti	Langchhenphu	S/Jongkhar	Bovine	8	0	1
10/10/2016	Pemaling	Biru	Samtse	Bovine	2	0	1
11/10/2016	SJ QS	Deothang	S/Jongkhar	Bovine	30	26	1

Note: outbreak were defined by considering the temporal and spatial distribution plus the incubation period of the disease and thus some cases were reflected a zero indicating continuation of the previous outbreaks.

Annexure 3: Details of FMD outbreaks during 2017(Source: TADInfo database, NCAH)

Date of first case	Month	Village	Geog	Dzongkhag	Species	Cases	Deaths	Outbreak
1/11/2017	Januray	Thotney	Tading	Samtse	Bovine	16	1	1
2/15/2017	February	Namcheyla	Tashiding	Dagana	Swine	28	0	1
2/25/2017	February	Samtse	Samtse	Samtse	Bovine	5		1
2/25/2017	February	Samtse	Samtse	Samtse	Bovine	3		0
2/25/2017	February	Samtse	Samtse	Samtse	Bovine	3		0
2/25/2017	February	Samtse	Samtse	Samtse	Bovine	2		0
2/25/2017	February	Samtse	Samtse	Samtse	Bovine	1		0
2/25/2017	February	Samtse	Samtse	Samtse	Bovine	2		0

2/25/2017	February	Samtse	Samtse	Samtse	Bovine	3		0
2/25/2017	February	Samtse	Samtse	Samtse	Bovine	3		0
2/25/2017	February	Samtse	Samtse	Samtse	Bovine	3		0
3/31/2017	March	Qurantine station	Orong	Samdrup Jongkhar	Bovine	11	11	1
4/3/2017	April	Benekha	Denchukha	Samtse	Bovine	20		1
5/4/2017	May	Pangji	Lokchina	Chukha	Bovine	116	8	1
6/1/2017	June	Chhukha	Lamgong	Paro	Bovine	2	0	1
6/1/2017	June	Chhukha	Lamgong	Paro	Bovine	3	0	0
6/7/2017	June	Jingga	Lamgong	Paro	Bovine	6	0	0
6/11/2017	June	Chhukha	Lamgong	Paro	Bovine	5	0	0
6/11/2017	June	Jingga	Lamgong	Paro	Bovine	5	0	0
6/12/2017	June	Chhukha	Lamgong	Paro	Bovine	6	0	0
6/12/2017	June	Jijokha	Lamgong	Paro	Bovine	3	0	0
6/13/2017	June	Jagarthan	Lamgong	Paro	Bovine	5	1	0
6/14/2017	June	Jijokha	Lamgong	Paro	Bovine	4	0	0
6/20/2017	June	Chhukha	Lamgong	Paro	Bovine	4	0	0
6/21/2017	June	Chhukha	Lamgong	Paro	Bovine	4	2	0
6/21/2017	June	Chhukha	Lamgong	Paro	Bovine	4	2	0
6/23/2017	June	Chhukha	Lamgong	Paro	Bovine	3	1	0
6/26/2017	June	Chhukha	Lamgong	Paro	Bovine	4	0	0
6/25/2017	June	Shomo	Lamgong	Paro	Bovine	4	1	0
6/25/2017	June	Chhukha	Lamgong	Paro	Bovine	7	0	0
6/28/2017	June	Jagarthan	Lamgong	Paro	Bovine	4	0	0
6/30/2017	June	Jagarthan	Lamgong	Paro	Bovine	7	0	0
7/2/2017	July	Tenchhen	Lamgong	Paro	Bovine	2	0	0
7/6/2017	July	Damchona	Dopshari	Paro	Bovine	4	0	0
7/7/2017	July	Damchona	Dopshari	Paro	Bovine	1	0	0
7/7/2017	July	Damchona	Dopshari	Paro	Bovine	1	0	0
7/5/2017	July	Jangsa	Lungnyi	Paro	Bovine	2	0	0
7/8/2017	July	Rotogong	Dopshari	Paro	Bovine	1	0	0
7/8/2017	July	Shari	Dopshari	Paro	Bovine	1	0	0
9/7/2017	September	Bangtegang	Bongo	Chukha	Bovine	12	0	1
9/2/2017	September	Chufakilo	Genye	Thimphu	Bovine	4	0	1
9/4/2017	September	Chufakilo	Genye	Thimphu	Bovine	3	0	0

Note: All FMD cases are not captured in this data

Annexure 4: Details of Rabies outbreaks in the country (2012-2015) (Source: TADInfo database, NCAH).

Date	Village	Geog	Dzongkhag	Species	Death
27-Jul-12	Tsangchhu	Phuntsthothang	S/Jongkhar	Bovine	1
10-Aug-12	Yub_Khezo	Jamkhar	T/ Yangtse	Bovine	1
13-Aug-12	Golanti	Langchhenphu	S/Jongkhar	Bovine	1
13-Aug-12	Golanti	Langchhenphu	S/Jongkhar	Canine	1
25-Aug-12	wangtsa	Katsho	Haa	Canine	1

4-Sep-12	RBA Colony	Dewathang	S/Jongkhar	Canine	1
4-Sep-12	Laring	Hiley	Sarpang	Feline	1
12-Sep-12	Golanti	Langchhenphu	S/Jongkhar	Bovine	5
9-Oct-12	Phuentsholing	Phuntsholing	Chukha	Canine	1
10-Oct-12	Phuentsholing	Phuntsholing	Chukha	Canine	1
10-Oct-12	RBA Colony	Dewathang	S/Jongkhar	Canine	1
12-Oct-12	Chumkuna	Phuntsholing	Chukha	Canine	1
25-Oct-12	Gelephu	Gelephu	Sarpang	Canine	1
28-Oct-12	Kuwapani	Hiley	Sarpang	Caprine	1
13-Nov-12	Gelephu	Gelephu	Sarpang	Bovine	1
17-Nov-12	Chenari	Dewathang	S/Jongkhar	Canine	1
17-Nov-12	Chenari	Dewathang	S/Jongkhar	Bovine	1
17-Nov-12	Chenari	Dewathang	S/Jongkhar	Feline	1
6-Dec-12	Pelrithang	Gelephu	Sarpang	Feline	1
20-Dec-12	Pelrithang	Gelephu	Sarpang	Canine	1
22-Dec-12	Gelephu	Gelephu	Sarpang	Bovine	1
5-Jan-13	Phuentsholing	Phuntsholing	Chukha	Canine	1
7-Jan-13	Gelephu	Gelephu	Sarpang	Canine	1
12-Jan-13	Phuentsholing	Phuntsholing	Chukha	Canine	1
18-Jan-13	Sarkitar	Samtse	Samtse	Canine	1
22-Feb-13	BCCL Colony	Samphelling	Chukha	Bovine	1
24-Feb-13	Phuentsholing	Phuntsholing	Chukha	Canine	1
26-Feb-13	BCCL Colony	Samphelling	Chukha	Bovine	1
12-Mar-13	DVH Samtse	Samtse	Samtse	Bovine	1
28-Mar-13	Phuentsholing	Phuntsholing	Chukha	Canine	1
28-Mar-13	Phuentsholing	Phuntsholing	Chukha	Canine	3
2-Apr-13	Deptshang	Serthig	S/Jongkhar	Bovine	5
4-Apr-13	« Samtse »	Samtse	Samtse	Canine	1
22-May-13	Malaybasay	Samphelling	Chukha	Canine	1
12-Jun-13	Lower Toribari	Phuntsholing	Chukha	Bovine	1
24-Jul-13	Phuentsholing	Phuntsholing	Chukha	Canine	1
6-Oct-13	Pana 'A'	Samphelling	Chukha	Bovine	1
14-Nov-13	RBA Colony	Dewathang	S/Jongkhar	Canine	1
25-Nov-13	Bukey	Samtse	Samtse	Bovine	1
13-Dec-13	Samdrupling	Dewathang	S/Jongkhar	Bovine	1
1-Mar-14	Dolungang	Dekiling	Sarpang	Bovine	2
4-Mar-14	DVH Samtse	Samtse	Samtse	Bovine	1
20-Mar-14	Yeuling	Chhuzagang	Sarpang	Canine	1

25-Mar-14	Chaskar	Chhuzagang	Sarpang	Bovine	1
31-Mar-14	Kaphung	Sherzhong	Sarpang	Bovine	2
17-Apr-14	Kalimati	Sipsu	Samtse	Bovine	1
22-Apr-14	Phuentsholing	Phuntsholing	Chukha	Canine	1
1-May-14	Gelephu	Gelephu	Sarpang	Canine	5
5-May-14	Gaden	Umling	Sarpang	Canine	2
13-May-14	Sarpangtar	Shompangkha	Sarpang	Canine	1
20-May-14	Pelrithang	Gelephu	Sarpang	Canine/bovine	2
21-May-14	Rai Gaon	Ugentse	Samtse	Bovine	1
10-Jun-14	Pelrithang	Gelephu	Sarpang	Bovine	1
10-Jun-14	Pemaling	Sherzhong	Sarpang	Bovine	1
24-Jun-14	Phuentsholing	Phuntsholing	Chukha	Canine	1
8-Jul-14	Pakhaygaun	Shompangkha	Sarpang	Canine	1
16-Jul-14	DVH Samtse	Samtse	Samtse	Canine	1
5-Aug-14	Sukreti	Samtse	Samtse	Bovine	1
7-Aug-14	Gaden	Umling	Sarpang	Bovine	1
29-Aug-14	Dzomlingthang	Gelephu	Sarpang	Canine	1
5-Sep-14	DVH Samtse	Samtse	Samtse	Canine	2
8-Sep-14	Dekiling	Dekiling	Sarpang	Bovine	1
12-Sep-14	Serzhong	Sherzhong	Sarpang	Bovine	1
21-Sep-14	Bhimtar	Chengmari	Samtse	Canine	1
17-Oct-14	Pelrithang	Gelephu	Sarpang	Caprine	1
9-Dec-14	Dzomlingthang	Gelephu	Sarpang	Bovine	1
29-Dec-14	Phuentsholing	Phuntsholing	Chukha	Canine	2
8-Jan-15	Pelrithang	Gelephu	Sarpang	Bovine	1
16-Jan-15	Pelrithang	Gelephu	Sarpang	Bovine	1
23-Jan-15	Pelrithang	Gelephu	Sarpang	Bovine	1
23-Jan-15	Pelrithang	Gelephu	Sarpang	Bovine	1
5-Feb-15	Lahatar	Pagli	Samtse	Bovine	1
11-Feb-15	Pelrithang	Gelephu	Sarpang	Bovine	1
11-Feb-15	Balatung	Sengye	Sarpang	Canine	1
14-Feb-15	Bukey	Samtse	Samtse	Bovine	1
14-Feb-15	Bukey	Samtse	Samtse	Caprine	1
14-Feb-15	Bukey	Samtse	Samtse	Canine	2
14-Feb-15	Bukey	Samtse	Samtse	Bovine	1
2-Mar-15	Lewkhop	Dekiling	Sarpang	Bovine	1
14-Mar-15	Uttarey/Sangla	Pagli	Samtse	Bovine	1
27-Mar-15	Dzomlingthang	Gelephu	Sarpang	Bovine	1

24-Apr-15	Pelrithang	Gelephu	Sarpang	Bovine	1
6-May-15	Pelrithang	Gelephu	Sarpang	Caprine	1
11-May-15	Chhar	Shompangkha	Sarpang	Bovine	2
16-May-15	Pelrithang	Gelephu	Sarpang	Bovine	1
14-Jun-15	Phuentsholing	Phuntsholing	Chukha	Bovine	3
29-Jun-15	Malaybasay	Samphelling	Chukha	Caprine	2
11-Aug-15	Saureni	Samtse	Samtse	Bovine	2
17-Sep-15	Norbuling	Sherzhong	Sarpang	Canine	3
24-Nov-15	Tala Busty	Langchhenphu	S/Jongkhar	Bovine	1
18-Dec-15	Dugsa	Jangchhubling	S/Jongkhar	Canine/Bovine	4 & 2
31-Dec-15	Khare Pakhey	Shompangkha	Sarpang	Swine	1

Annexure 5: Details of Rabies outbreaks during 2016 (Source: TADInfo database, NCAH)

Date	Village	Geog	Dzongkhag	Species	Deaths	Outbreak
8/1/2016	Namkhaling	Gelephu	Sarpang	Canine	1	1
11/1/2016	Gonpa	Jangchhubling	S/Jongkhar	Bovine	1	1
21/1/2016	Narphung	Jangchhubling	S/Jongkhar	Canine	1	1
22/1/2016	Gonpa	Jangchhubling	S/Jongkhar	Bovine	1	0
22/1/2016	Lower Langchenphu	Langchhenphu	S/Jongkhar	Canine	1	1
31/1/2016	Charkilo	Dewathang	S/Jongkhar	Canine	1	1
2/2/2016	Narphung	Jangchhubling	S/Jongkhar	Canine	1	0
4/2/2016	RICB Sjongkhar	Dewathang	S/Jongkhar	Canine	1	0
7/2/2016	Pelrithang	Gelephu	Sarpang	Bovine	1	0
26/2/2016	Boti kharka	ugyentse	Samtse	Canine	1	1
27/2/2016	RBA Samtse	Samtse	Samtse	Canine	1	1
2/3/2016	Baazar Area	Pagli	Samtse	Bovine	1	1
2/3/2016	Daragaon	Samphelling	Chukha	Bovine	1	0
3/3/2016	Ahally	Samphelling	Chukha	Canine	1	1
28/3/2016	Haa town	Uesu	Haa	Canine	1	0
7/4/2016	Pelrithang school	Gelephu	Sarpang	Canine	1	1
12/4/2016	Rabdeyling	Gelephu	Sarpang	Canine	1	0
15/4/2016	Khairayne-torsa	Phuntsholing	Chukha	Canine	1	1
18/4/2016	Lamatar	Samtse	Samtse	Bovine	1	1
5/4/2016	Pelrithang	Gelephu	Sarpang	Bovine	1	0
28/7/2016	Merak	Merak	Trashigang	Canine	1	1

13/8/2016	Serkem Laptsa	Merak	Trashigang	Yak	1	0
13/8/2016	Wooling	Jangchhubling	S/Jongkhar	Canine	1	1
24/8/2016	Ahally	Samphelling	Chukha	Canine	1	0
17/9/2016	Boteykharka	Ugentse	Samtse	Canine	1	0
7/10/2016	Rai Gaon	Ugentse		Bovine	1	1
7/10/2016	Tsakaling	Yoeseltse	Samtse	Bovine	1	1
18/10/2016	Bhimtar-Hat khola	Chengmari	Samtse	Canine	1	1
21/10/2016	Wooling	Jangchhubling	S/Jongkhar	Bovine	1	0
6/10/2016	Rangjung School	Shongphu	Trashigang	canine	1	1
7/10/2016	Rangjung School	Shongphu	Trashigang	canine	1	0
12/10/2016	Rangjung town	Shongphu	Trashigang	canine	1	0
14/10/2016	Rangjung Chongthi	Shongphu	Trashigang	Feline	1	0
17/10/2016	Rangjung School	Shongphu	Trashigang	canine	1	0
17/10/2016	Rangjung School	Shongphu	Trashigang	canine	1	0
17/10/2016	Rangjung School	Shongphu	Trashigang	canine	1	0
17/10/2016	Rangjung School	Shongphu	Trashigang	canine	1	0
18/10/2016	Sakteng	Sakteng	Trashigang	Bovine	1	1
20/10/2016	Rangjung town	Shongphu	Trashigang	canine	1	0
2/11/2016	Lekithang	Gelephu	Sarpang	Canine	1	1
11/7/2016	Radi Khatoe	Radi	Trashigang	canine	1	1
11/11/2016	Trashigang town	Samkhar	Trashigang	canine	1	1
11/12/2016	Trashigang town	Samkhar	Trashigang	canine	1	0
29/11/2016	Rangjung School	Shongphu	Trashigang	canine	1	0
29/11/2016	Radi Pakaling	Radi	Trashigang	canine	1	0
1/12/2016	Buna	Shongphu	Trashigang	Bovine	1	0
3/12/2016	Tokshingmang	Radi	Trashigang	canine	1	0
3/12/2016	Radi bazar	Radi	Trashigang	canine	1	0
4/12/2016	Dekiling	Radi	Trashigang	Bovine	1	0
11/12/2016	Goumounay	Samphelling	Chukha	Canine	1	1
4/12/2016	Buna	Shongphu	Trashigang	Bovine	1	0
5/12/2016	Tsangkhar	Radi	Trashigang	canine	1	0
16/12/2016	Langten	Radi	Trashigang	Bovine	1	0
18/12/2016	Buna	Shongphu	Trashigang	Bovine	1	0
26/12/2016	Pemathang	Gelephu	Sarpang	Bovine	1	1
29/12/2016	Dekiling	Radi	Trashigang	Bovine	1	0
31/12/2016	Thonkorong	Orong	S/Jongkhar	canine	1	1

Note: outbreak definition same as for FMD

Annexure 6: Details of Rabies outbreaks during 2017 (Source: TADInfo database, NCAH)

Date of first case	Location	Geog	Dzongkhag	Species	Deaths	Outbreak
18/1/2017	Pelrithang	Gelephu	Sarpang	Bovine	1	1
7/1/2017	Samdrup Jongkhar	Orong	Sjongkhar	Dog	1	1
11/2/2017	Lower Langchenphu	Langchhenphu	Sjongkhar	Bovine	1	1
8/3/2017	Girigoan	Chengmari	Samtse	Bovine	1	1
17/1/2017	Nyabasti	Samphelling	Chukha	Dog	1	1
29/1/2017	Kharkhola	Samphelling	Chukha	Dog	1	0
8/2/2017	Phuentsholing-GOL building	Phuntsholing	Chukha	Dog	1	0
8/2/2017	Nyabasti	Samphelling	Chukha	Dog	1	0
8/2/2017	Nyabasti	Samphelling	Chukha	Dog	1	0
4/5/2017	Balatang	Sengye	Sarpang	Bovine	1	1
4/7/2017	Penjorling A	Sipsu	Samtse	Dog	1	1
5/11/2017	Bahaunitar	Chargharey	Samtse	Bovine	1	1
19/6/2017	Gelephu	Gelephu	Sarpang	Bovine	1	1
16/3/2017	Karmaling	Deorali	Dagana	Dog	1	1
14/7/2017	Samrang	Samrang	Samdrup Jongkhar	Dog	1	1
5/8/2017	Pelrithang	Gelephu	Sarpang	Bovine	1	1
1/7/2017	Samtse	Samtse	Samtse	Dog	1	1
3/8/2017	Lower Ghathia	Chargharey	Samtse	Bovine	1	1
14/8/2017	Dzomlingthang	Gelephu	Sarpang	Bovine	1	1
27/5/2017	Samphelling	Samphelling	Chukha	Dog	1	1
9/9/2017	Phuntsholing	Phuntsholing	Chukha	Equine	1	1
8/1/2017	Rangjung Chongthi	Shongphu	Trashigang	Dog	1	1
2/1/2017	Buna VTI	Shongphu	Trashigang	Dog	1	0
6/2/2017	Yangchenma	Bidung	Trashigang	Dog	1	0
9/2/2017	Rangjung Duthroe	Shongphu	Trashigang	Dog	1	0
10/2/2017	Dekiling	Radi	Trashigang	Dog	1	0
10/2/2017	Dramang	Shongphu	Trashigang	Bovine	1	0
24/2/2017	Restong	Samkhar	Trashigang	Dog	1	0
14/2/2017	Drungoenpa	Radi	Trashigang	Dog	1	0
24/2/2017	Dupwang_galing	Shongphu	Trashigang	Dog	1	0
14/3/2017	Dupwang_galing	Shongphu	Trashigang	Dog	1	0
14/3/2017	Dupwang_galing	Shongphu	Trashigang	Dog	1	0
14/3/2017	Dupwang_galing	Shongphu	Trashigang	Dog	1	0
15/3/2017	Kibuhoeling lhakhang	Shongphu	Trashigang	Dog	1	0
18/3/2017	RCS	Shongphu	Trashigang	Dog	1	0
25/3/2017	Galing gonpa	Shongphu	Trashigang	Dog	1	0
25/3/2017	Trashigang	Samkhar	Trashigang	Dog	1	0
28/3/2017	Changmey	Shongphu	Trashigang	Dog	1	0
29/3/2017	Dupwang_galing	Shongphu	Trashigang	Bovine	1	0
1/4/2017	Dupwang_galing	Shongphu	Trashigang	Dog	1	0
15/4/2017	RCS	Shongphu	Trashigang	Dog	1	0
9/5/2017	RCS	Shongphu	Trashigang	Dog	1	0
14/6/2017	Dupwang_galing	Shongphu	Trashigang	Bovine	1	0
26/6/2017	Radi bazar	Radi	Trashigang	Dog	1	0
3/9/2017	Tungudempa	Ngangla	Zhemgang	Dog	1	1
11/9/2017	Sonamthang	Ngangla	Zhemgang	Dog	1	0
14/9/2017	Sonamthang	Ngangla	Zhemgang	Dog	1	0

14/9/2017	Sonamthang	Ngangla	Zhemgang	Dog	1	0
15/9/2017	Marangdut	Ngangla	Zhemgang	Bovine	1	0
15/9/2017	Tungudempa	Ngangla	Zhemgang	Dog	1	0
17/9/2017	Sonamthang (lower)	Ngangla	Zhemgang	Dog	1	0
17/9/2017	Sonamthang (upper)	Ngangla	Zhemgang	Dog	1	0
17/9/2017	Marangdut	Ngangla	Zhemgang	Bovine	1	0
19/9/2017	Panbang	Ngangla	Zhemgang	Dog	1	0
19/9/2017	Sonamthang (lower)	Ngangla	Zhemgang	Dog	1	0
22/9/2017	Sonamthang	Ngangla	Zhemgang	Dog	1	0
23/9/2017	Marangdut	Ngangla	Zhemgang	Bovine	1	0
24/9/2017	Sonamthang	Ngangla	Zhemgang	Dog	1	0
25/9/2017	Tungudempa	Ngangla	Zhemgang	Dog	1	0
26/9/2017	Marangdut	Ngangla	Zhemgang	Bovine	1	0
27/9/2017	Thinleygang	Ngangla	Zhemgang	Dog	1	0
28/9/2017	Sonamthang	Ngangla	Zhemgang	Dog	1	0
29/9/2017	Sonamthang dratshang	Ngangla	Zhemgang	Dog	1	0
2/10/2017	Tungudempa	Ngangla	Zhemgang	Bovine	1	0
3/10/2017	Thinleygang	Ngangla	Zhemgang	Bovine	1	0
3/10/2017	Tungudempa	Ngangla	Zhemgang	Bovine	1	0
7/10/2017	Marangdut	Ngangla	Zhemgang	Bovine	1	0
10/10/2017	Marangdut	Ngangla	Zhemgang	Bovine	1	0
17/10/2017	Marangdut	Ngangla	Zhemgang	Bovine	1	0
23/12/2017	Tendruk	Tendruk	Samtse	Bovine	1	1

Note: All rabies cases are not captured in this data

Annexure 7: Details of Anthrax outbreaks in the country (2012-2015) (Source: TADInfo database, NCAH)

Date	Village	Geog	Dzongkhag	Species	Cases	Deaths
17-Jan-12	Mikche	Nubi	Trongsa	Bovine	1	1
18-Feb-12	Yonphula	Kanglung	Trashigang	Bovine	3	3
26-Feb-12	Lower Ghathia	Chargharey	Samtse	Bovine	3	3
26-Feb-12	Rongthung	Kanglung	Trashigang	Bovine	1	1
28-Feb-12	kongkha	Phuntsholing	Chukha	Bovine	1	1
9-Mar-12	Kadam	Kanglung	Trashigang	Bovine	1	1
21-Mar-12	Tselungkha	Uesu	Haa	Bovine	1	1
22-Mar-12	Bali	Katsho	Haa	Bovine	1	1
17-Apr-12	Willing	Nubi	Trongsa	Bovine	1	1
22-Apr-12	Chhuchhup	Nubi	Trongsa	Bovine	1	1
15-Jul-12	Willing	Nubi	Trongsa	Bovine	1	1
15-Sep-12	Kalizimgkha	Tseza	Dagana	Bovine	3	3
7-Jul-14	Gonglhakha Zero	Gayling	Chukha	Bovine	1	1
1-Jan-15	RNR EC Kazhi	Kazhi	Wangdue	Bovine	5	5
26-Oct-15	Sinchula	Darla	Chukha	Swine	1	1

Annexure 8: Details of Anthrax outbreaks during 2016 (Source: TADInfo database, NCAH).

Date	Village	Geog	Dzongkhag	Species	Cases	Deaths	Outbreak
27/2/2016	Samtse town	samtse	Samtse	Bovine	1	1	1
6/4/2016	Maula	Nichula	Dagana	Bovine	2	2	1

Annexure 9: Details of Anthrax outbreaks during 2017 (Source: TADInfo database, NCAH).

Date of first case	Localition	Geog	Dzongkhag	Species	Cases	Deaths	Outbreak
2/11/2017	BCCL Colony	Samphelling	Chukha	Bovine	1	1	1
5/23/2017	Baytsho,K	Uesu	Haa	Bovine	2	2	1
4/24/2017	Nimshong	Korphu	Trongsa	Bovine	5	5	1

Annexure 10: Details of Black Quarter outbreaks in the country (2012-2015) (Source: TADInfo database, NCAH).

Date	Village	Geog	Dzongkhag	Species	Cases	Deaths
8-Feb-12	Chongzhik	Shengana	Punakha	Bovine	3	2
12-Feb-12	Semji	Nubi	Trongsa	Bovine	1	1
2-Mar-12	Mirichemo	Bongo	Chukha	Bovine	4	4
7-Mar-12	Gonpa Woo	Dechhenling	Pemagatshel	Bovine	5	5
9-Mar-12	kongkha	Phuntsholing	Chukha	Bovine	1	1
17-Mar-12	Rizor	Udzorong	Trashigang	Bovine	1	1
17-Mar-12	Rizor	Udzorong	Trashigang	Bovine	1	1
10-Apr-12	Cheeyul	Getana	Chukha	Bovine	1	1
16-Apr-12	Cheeyul	Getana	Chukha	Bovine	1	1
16-Apr-12	Cheeyul	Getana	Chukha	Bovine	1	1
16-Apr-12	Jikhu	Getana	Chukha	Bovine	3	3
26-Apr-12	Tshachhup	Toewang	Punakha	Bovine	3	3
4-May-12	Choilicop	Samtse	Samtse	Bovine	2	1
4-Jul-12	Gangkha	Nahi	Wangdue	Bovine	4	4
12-Sep-12	NNBF	Khaling	Trashigang	Bovine	1	1
21-Sep-12	Willing	Nubi	Trongsa	Bovine	1	
13-Oct-12	Bjasa	Goenkham	Gasa	Bovine	3	3
20-Oct-12	NNBF	Khaling	Trashigang	Bovine	1	0

18-Nov-12	NNBF	Khaling	Trashigang	Bovine	1	1
23-Nov-12	Goling	Nangkor	Zhemgang	Bovine	4	4
8-Jan-13	Namling	Saleng	Mongar	Bovine	1	0
8-Jan-13	Gangjug	Saleng	Mongar	Bovine	5	0
10-Jan-13	Namling	Saleng	Mongar	Bovine	1	0
25-Jan-13	Jarogang	Athang	Wangdue	Bovine	9	8
2-Feb-13	Dzomesa	Dzome	Punakha	Bovine	2	2
6-Feb-13	Gangtramo	Talo	Punakha	Bovine	3	3
6-Feb-13	Labtsakha	Talo	Punakha	Bovine	1	1
7-Feb-13	Silipang	Guma	Punakha	Bovine	1	
26-Feb-13	PWD Colon	Bapisa	Punakha	Bovine	1	1
28-Feb-13	Tshachhup	Toewang	Punakha	Bovine	12	12
4-Mar-13	Kadam	Mongar	Mongar	Bovine	1	0
9-Mar-13	Chadokha	Lokchina	Chukha	Bovine	14	14
10-Mar-13	Willing	Nubi	Trongsa	Bovine	1	
29-Mar-13	Bartsheri	Shumar	Pemagatshel	Bovine	1	1
3-Apr-13	Ramatoto	Chang	Thimphu	Bovine	1	1
16-Apr-13	Shangling	Nangkor	Zhemgang	Bovine	21	21
21-May-13	Tshangkha	Tangsibji	Trongsa	Bovine	1	1
19-Jun-13	Pamlamfrang	Samkhar	Trashigang	Bovine	1	
28-Jun-13	Alubari	Bjachho	Chukha	Bovine	1	1
2-Jul-13	Alubari	Bjachho	Chukha	Bovine	1	1
11-Jul-13	Pakhaygaun	Shompangkha	Sarpang	Bovine	4	4
26-Jul-13	Chazam	Samkhar	Trashigang	Bovine	1	
1-Aug-13	Norgang	Chhokhor	Bumthang	Bovine	1	
26-Aug-13	Phungputhoe	Yangtse	T/ Yangtse	Bovine	1	
1-Sep-13	DechenPelri	Tang	Bumthang	Bovine	1	1
3-Sep-13	Sisithangka	Sama	Haa	Bovine	1	1
6-Sep-13	BS farm	Chhokhor	Bumthang	Bovine	1	1
25-Sep-13	Riserboo	Mendrelgang	Tsirang	Bovine	7	7
28-Nov-13	Thangu	Thedtsho	Wangdue	Bovine	1	1
8-Dec-13	Om Teykha	Rubesa	Wangdue	Bovine	1	1
10-Dec-13	Thangu	Thedtsho	Wangdue	Bovine	1	1
19-Dec-13	Tshangkha	Tangsibji	Trongsa	Bovine	1	1
5-Jan-14	BarsaKab	Goenkham	Gasa	Bovine	3	1
9-Jan-14	Baikunza	Bongo	Chukha	Bovine	8	8
17-Jan-14	Kadam	Mongar	Mongar	Bovine	2	1
30-Jan-14	Juprey	Bhur	Sarpang	Bovine	1	1

23-Feb-14	Gothong	Udzorong	Trashigang	Bovine	10	10
7-Mar-14	Bunakha	Chapcha	Chukha	Bovine	2	1
13-Mar-14	Yonphula	Kanglung	Trashigang	Bovine	1	1
14-Mar-14	Dungkharling	Bhur	Sarpang	Bovine	3	3
17-Mar-14	Samkhara	Jigmichhoeling	Sarpang	Bovine	4	4
5-May-14	Lungkha	Dzome	Punakha	Bovine	2	1
17-Jun-14	Omchhu	Gayling	Chukha	Bovine	3	3
19-Jun-14	ManiChol	Goenkhatoe	Gasa	Bovine	1	0
5-Jul-14	Bachhu	Getana	Chukha	Bovine	3	3
24-Aug-14	NNBF	Khaling	Trashigang	Bovine	1	1
24-Sep-14	Goensakha	Dogar	Paro	Bovine	2	0
11-Nov-14	Drupchugang	Tsholingkhar	Tsirang	Bovine	1	1
10-Feb-15	Padichhu	Bongo	Chukha	Bovine	3	3
10-Feb-15	Tangsibji	Tangsibji	Trongsa	Bovine	1	1
10-Feb-15	Philuma	Jangchhubling	S/Jongkhar	Bovine	11	11
6-Mar-15	Kangugom	Rubesa	Wangdue	Bovine	3	3
9-Mar-15	Jangsa	Dopshari	Paro	Bovine	1	1
30-Mar-15	Dungbi	Trong	Zhemgang	Bovine	11	11
19-Jun-15	Loushong	Nubi	Trongsa	Bovine	2	2
24-Sep-15	Bunakha	Chapcha	Chukha	Bovine	8	7
13-Oct-15	Jadigang	Dogar	Paro	Bovine	1	1
20-Oct-15	Peljorling	Rubesa	Wangdue	Bovine	3	3
26-Oct-15	Tamcho	Dogar	Paro	Bovine	2	0

Annexure 11: Details of Black Quarter outbreaks during 2016 (Source: TADInfo database, NCAH).

Date	Village	Geog	Dzongkhag	Species	Cases	Deaths	Outbreak
5/23/2016	Kazhi	Kazhi	Wangdue	Bovine	9	9	1
29/6/2016	Katsho Goenpa	Katsho	Haa	Bovine	4	1	1
8/20/2016	Damji	Goenkhamé	Gasa	Bovine	5	5	1
8/28/2016	Tshangkha	Tangsibji	Trongsa	Bovine	1	1	1

Annexure 12: Details of Black Quarter outbreaks during 2017 (Source: TADInfo database, NCAH).

Date of first case	Location	Geog	Dzongkhag	Species	Cases	Deaths	Outbreak
20/1/2017	Dungna	Dungna	Chukha	Bovine	2	2	1
14/4/2017	Nimshong	Korphu	Trongsa	Bovine	6	5	1
6/5/2017	Guma	Guma	Punakha	Bovine	4	4	1
16/7/2017	Shingkhey	Gasetshowom	Wangdue	Bovine	6	5	1
17/7/2017	Gasetshowom	Gasetshowom	Wangdue	Bovine	3	3	0
2/9/2017	Dungbi	Trong	Zhemgang	Bovine	1	1	1
15/8/2017	Gogojab	Gangte	Wangdue	Bovine	5	5	1

Annexure 13: Details of Hemorrhagic Septicaemia outbreaks in the country (2012-2015) (Source: TADInfo database, NCAH).

Date	Village	Geog	Dzongkhag	Species	Cases	Deaths
22-Jun-12	Peljorling	Rubesa	Wangdue	Bovine	6	6
9-Oct-12	Norgang	Chhokhor	Bumthang	Bovine	1	1
19-Nov-12	Nangsephe	Chhokhor	Bumthang	Bovine	2	2
10-Nov-13	Mongar	Mongar	Mongar	Bovine	1	0
19-Jan-14	Jedokha lumbukha	Lokchina	Chukha	Bovine	4	4
24-Mar-15	Jamisa	Mewang	Thimphu	Bovine	2	2
29-Mar-15	Tomla	Dangchu	Wangdue	Bovine	1	1
2-Apr-15	Yebisa	Chhubu	Punakha	Bovine	4	4
22-Jul-15	Kalizimgkha	Tseza	Dagana	Bovine	1	1

Annexure 14: Details of Hemorrhagic Septicaemia outbreaks during 2016 (Source: TADInfo database, NCAH).

Date	Village	Geog	Dzongkhag	Species	Cases	Deaths	Outbreak
28/2/2016	Dorokha	Dorokha	Samtse	Bovine	1	1	1
6/10/2016	Gedu	Bongo	Chukha	Bovine	2	2	1

Annexure 15: Details of Hemorrhagic Septicaemia outbreaks during 2017 (Source: TADInfo database, NCAH).

Date of first case	Location	Geog	Dzongkhag	Species	Cases	Deaths	Outbreak
2/20/2017	Tealing	Samphelling	Chukha	Bovine	2	2	1
3/27/2017	Gurung Dava	Samphelling	Chukha	Bovine	1	1	1

Annexure 16: Details of Newcastle Disease outbreaks in the country (2012-2015) (Source: TADInfo database, NCAH).

Date	Village	Geog	Dzongkhag	Species	Cases	Deaths
13-Sep-12	Lower Salami	Kikorthang	Tsirang	Avian	1000	5
18-Dec-12	Serjung	Martshala	S/Jongkhar	Avian	10	9
29-Jan-13	Chuwabari	Dekiling	Sarpang	Avian	10	7
26-Feb-13	RNR EC Mongar	Mongar	Mongar	Avian	3	0
23-May-13	Phuentsholing	Phuntsholing	Chukha	Avian	260	8
28-May-13	Toktokha	Bongo	Chukha	Avian	97	97
17-Jul-13	Lower Toribari	Phuntsholing	Chukha	Avian	30	5
11-Sep-13	Lower Toribari	Phuntsholing	Chukha	Avian	300	6
14-Sep-13	Wangdi Gasel	Phuntsholing	Chukha	Avian	170	8
23-Sep-13	Gurung Drangra	Darla	Chukha	Avian	10	6
4-Dec-13	Khamdra	Dogar	Paro	Avian	20	0
28-Dec-13	Dangragaon	Lhamoizingkha	Dagana	Avian	194	194
29-Dec-13	Yangbari	Gongdue	Mongar	Avian	82	77
14-Feb-14	Gangzur	Gangzur	Lhuentse	Avian	41	41
19-Feb-14	Hilley	Samrang	S/Jongkhar	Avian	73	38
8-Mar-14	Ree Jue	Umling	Sarpang	Avian	30	20
9-Mar-14	Tashiphug	Sherzhong	Sarpang	Avian	50	30
10-May-14	Kadam	Mongar	Mongar	Avian	7	7
18-Jan-15	Barpang	Bjoka	Zhemgang	Avian	50	21
7-Feb-15	Denphu	Serthig	S/Jongkhar	Avian	32	29
16-Feb-15	Barpang	Bjoka	Zhemgang	Avian	10	5
21-Aug-15	Kichhu	Lamgong	Paro	Avian	3	0

Annexure 17: Details of IBD outbreaks in the country (2014-2015) (Source: TADInfo database, NCAH).

Date	Village	Geog	Dzongkhag	Species	Cases	Deaths
6-Apr-14	Rani Bagan	Hiley	Sarpang	Avian	1120	1120
6-Apr-14	Patabari	Shompangkha	Sarpang	Avian	2450	1106
8-Apr-14	Juprey	Bhur	Sarpang	Avian	4150	865
19-May-14	Gawaithang	Dekiling	Sarpang	Avian	657	657
30-May-14	Lower Lobsibotay	Goserling	Tsirang	Avian	4571	2230
31-May-14	LowerTsholingkha	Tsholingkhar	Tsirang	Avian	1000	252
5-Jun-14	Sarpangtar	Shompangkha	Sarpang	Avian	350	350
11-Jun-14	Petakarpo	Theedtsho	Wangdue	Avian	901	734
16-Jun-14	Chhoekhorling	Dekiling	Sarpang	Avian	47	13
8-Jul-14	Juprey	Bhur	Sarpang	Avian	48	17
8-Jul-14	Chhuzomsa	Beteni	Tsirang	Avian	881	297
11-Jul-14	Jaruwa	Bhur	Sarpang	Avian	6	3
19-Jul-14	Chhoekhorling	Dekiling	Sarpang	Avian	29	11
21-Jul-14	Khorsanay	Dunglegang	Tsirang	Avian	600	103
23-Jul-14	Norbugang	Shompangkha	Sarpang	Avian	60	37
25-Jul-14	Charkilo	Genye	Thimphu	Avian	44	36
1-Aug-14	Patabari	Shompangkha	Sarpang	Avian	55	29
1-Aug-14	Dekiling	Dekiling	Sarpang	Avian	62	27
6-Aug-14	Chilikhar	Toepisa	Punakha	Avian	385	385
7-Aug-14	Chhoekhorling	Dekiling	Sarpang	Avian	12	5
11-Aug-14	Juprey	Bhur	Sarpang	Avian	35	17
22-Aug-14	Lower Bokray	Kikorthang	Tsirang	Avian	495	215
27-Aug-14	Rani Bagan	Hiley	Sarpang	Avian	700	500
15-Mar-15	Pemathang	Goserling	Tsirang	Avian	500	28
21-Apr-15	Dekiling	Dekiling	Sarpang	Avian	16	16
14-May-15	Kencholing	Shompangkha	Sarpang	Avian	5	4
2-Jul-15	Rani Bagan	Hiley	Sarpang	Avian	44	38
13-Dec-15	Tingtibhi	Trong	Zhemgang	Avian	1400	400

Annexure 18: Details of Gumboro outbreaks during 2016 (Source: TADInfo database, NCAH).

Date	Village	Geog	Dzongkhag	Species	Cases	Deaths	Outbreaks
1/4/2016	Dekiling	Dekiling	Sarpang	Avian	300	80	1
9/4/2016	Chuzomsa	Beteni	Tsirang	Avian	300	90	1
19/4/2016	Gawaithang	Dekiling	Sarpang	Avian	328	65	1

24/5/2016	Dolungang	Dekiling	Sarpang	Avian	120	45	1
8/6/2016	Kikhorthang	Goserling	Tsirang	Avian	3500	400	1
7/10/2016	Rani Bagan	Hiley	Sarpang	Avian	1000	789	1
12/12/2016	Tashiling	Dekiling	Sarpang	Avian	556	120	1

Annexure 19: Details of Gumboro outbreaks during 2017 (Source: TADInfo database, NCAH).

Date of first case	Farm	Location	Geog	Dzongkhag	Age	Cases	Deaths
3/6/2017	Broiler Farm	Uttarey	Pagli	Samtse	Chick	250	250

Annexure 20: Details of mixed infection with Marek's disease and ALC outbreaks during 2016 (Source: TADInfo database, NCAH).

Date	Village	Geog	Dzongkhag	Species	Cases	Deaths	Outbreak
6/28/2016	Poultry Farm	Wangchang	Paro	Avian	307	307	1

Annexure 21: Details of HPAI outbreaks in the country (2012-2015) (Source: TADInfo database, NCAH).

Date	Village	Geog	Dzongkhag	Species	Cases
13-Jan-12	Motithang	Chang	Thimphu	Avian	49
4-Jan-12	Tshemakha	Bjachho	Chukha	Avian	87
6-Jan-12	Mepesa	Bjachho	Chukha	Avian	16
8-Jan-12	Mepaiarig	Bjachho	Chukha	Avian	3
28-Jan-12	Kamji school area	Gayling	Chukha	Avian	4
30-Jan-12	Bunakha	Chapcha	Chukha	Avian	38
19-Feb-12	Gedu	Bongo	Chukha	Avian	10
14-Feb-12	Wangdi Gasel	Phuntsholing	Chukha	Avian	12
27-Mar-12	Yangbari	Gongdue	Mongar	Avian	70
14-Oct-12	Wangdi Gasel	Phuntsholing	Chukha	Avian	24
27-Dec-12	Kalikhola	Lhamoizingkha	Dagana	Avian	18
3-Mar-12	Burkhay	Samphelling	Chukha	Avian	1
10-Feb-12	Alay	Phuntsholing	Chukha	Avian	5
15-Feb-12	Thakuri Gaon	Ugentse	Samtse	Avian	12
14-Oct-12	Wangdi Gasel	Phuntsholing	Chukha	Avian	24

27-Dec-12	Kalikhola	Lhamoizingkha	Dagana	Avian	18
15-Jan-13	Gelephu	Gelephu	Sarpang	Avian	50
18-Jan-13	Pelrithang	Gelephu	Sarpang	Avian	8
25-Jan-13	Shawapang	Chhuzagang	Sarpang	Avian	6
3-Apr-15	Motithang	Chang	Thimphu	Avian	16

Annexure 22: Details of Highly Pathogenic Avian Influenza outbreaks during 2016
(Source: TADInfo database, NCAH).

Date	Village	Geog	Dzongkhag	Species	Cases	Outbreak
14/10/2016	Wangkha	Bjachho	Chukha	Avian	13	1

Annexure 23: Details of Classical Swine Fever outbreaks in the country (2012-2015)
(Source: TADInfo database, NCAH).

Date	Village	Geog	Dzongkhag	Species	Cases	Deaths
1-Apr-13	Bapalathang	Chhokhor	Bumthang	Swine	1	1
13-Aug-13	Damchu	Chapcha	Chukha	Swine	2	1
21-Nov-13	Phumu	Doteng	Paro	Swine	9	1
23-Oct-15	Dungbi	Trong	Zhemgang	Swine	1	1

Annexure 24: Details of Classical Swine Fever outbreaks during 2016 (Source: TADInfo database, NCAH).

Date	Village	Geog	Dzongkhag	Species	Cases	Deaths	Outbreak
1/9/2016	Waklaytar	Patale	Tsirang	Swine	9	9	1

Annexure 25: Details of PPR outbreaks in the country (2010-2015) (Source: TADInfo database, NCAH).

Date	Geog	Dzongkhag	Species	Cases	Deaths
15/06/2010	Bjapcho	Chukha	Caprine	84	27
12/21/2012	Samtse	Samtse	Caprine	1	0
6/5/2013	Bjachho	Chukha	Caprine	87	41
7/1/2013	Bhur	Sarpang	Caprine	14	10
7/3/2014	Lhamoizingkha	Dagana	Caprine	120	46
7/11/2014	Bjachho	Chukha	Caprine	20	7
8/18/2014	Samtse	Samtse	Caprine	42	4

Annexure 26: Details of PPR outbreaks during 2016 (Source: TADInfo database, NCAH).

Date	Village	Geog	Dzongkhag	Species	Cases	Deaths	Outbreak
4/5/2016	QS Gelephu	Gelephu	Sarpang	caprine	19	19	1

Annexure 27: Details of vaccine procured and distributed to various dzongkhags and central units for disease prevention and control during FY 2016-17(Source: BPU, NCAH).

Sl.No.	Dzongkhags/ Central Units	Locally Produced						Imported					
		Anthrax	SF	FMD Oil	HSBQ	IBD	Fowl Pox	NDB ₁	R ₂ B	Marek's	Rabisin	DHPPI + L	PPR
	Dzongkhags												
1	Bumthang			9000	1980	2600	5000		1000		1250		
2	Chhukha		500	4250	750	130000	12000	59400	18000		670		
3	Dagana		200	22400	7440	26000	6000	16800	11600		3150		
4	Gasa			1500	300						150	5	
5	Haa			3000	600		5000		3000		1100	25	
6	Lhuentse			6000	6990	18000	3000	6000	12000		200	1	
7	Mongar			12200	7200	133800		56600	30300		1400	10	
8	Paro		360	9500	3720	35000	20000	20000	17000		1500	189	
9	Pemagatshel		200	4900	5100	34000	14000	14000	13000	3000	1600		
10	Punakha			8000	2010	40000	20000	20000	20000			25	
11	Samdrup Jongkhar			8000	7020	60000	20000	20000	20000	20000	5500	30	
12	Samtse			45000	9300	166000	15000	40000	20000		5820		2900
13	Sarpang		800	17000	14070	758000	290000	220000	250000		1100		
14	Thimphu			14850	2010	33200	15000	11800	8600		600		
15	Trashigang			20000	20010	10000		5000	5000		4600	50	
16	Trashiyangtse			5000	2010	7000	8000	5000	2000		2100		
17	Trongsa			5000	2520	17400	1000	5800	10700		300	16	
18	Tsirang		1000	8600	2010	120000	20000	100000	50000		800	20	2000
19	Wangdue Phodrang		50	16000	6510	41000	14000	18000	32000		250	135	
20	Zhemgang			8300	420	6000	2000	7000	4000		200		
	Central Units												
1	NDDC, Yusipang			250									
2	BSF, Bumthang												
3	NJBC, Samtse	200		500	300								
4	NNBF, Trashiyangphu				270								
5	NPoDC, Sarpang					68000	30000	32000	22000	250000			
6	NPBC, Yusipang		650	500									
7	NSBC, Bumthang												

8	NPDC, Gelephu		2500	950									
9	Calf Rearing Centre, Wangkha			350	240								
10	RPPBC, Lingmethang		1000	50		10000	13000	3600	7000	90000			
11	RMBF, Arong												
12	RMBF, Wangdigang												
13	RPBC, Paro					3000		2000		30000			
14	National Animal Hospital			100		1600		600			3800	255	
15	Private Poultry Farm					98800	10000	85600	14700	150000			
16	RLP, Zhemgang												
17	RLDC Wangdue												
18	RLDC Tsimasham										2500	125	
19	RLDC Zhemgang											50	
20	RLDC Kanglung			1000	210	27000		9000	9000		500		
21	NDPM & RCP (HSI)										3000		
22	Local Use / Campaign										2000		
23	CNR, Lobeyesa					1000	1000	600	1000				
Total doses distributed		200	7260	232200	102990	1847400	524000	758800	581900	543000	44090	936	4900
Vaccines produced/procured		2300	8690	152500	69510	2120000	900000	1160000	854300	890000	40000	900	4900

Annexure 21: Laboratory diagnostic capacity at LSU, NCAH, Serbithang

Disease	Bhutan*	OIE**
Anthrax	Agt id	-
Foot and mouth disease	ELISA, PCR	ELISA, VN, CF
Leptospirosis	Agt id, MAT	MAT
Paratuberculosis (JD)	ELISA	ELISA, DHT
Rabies	IC, FAT	ELISA, VN
Trichinellosis	Agt id	Agt id, ELISA
Trypanosomiasis	Agt id	-
AI (A, H5N1, H7N9)	PCR, HAI, IC	VI, AGID, HAI
Avian Mycoplasmosis	ELISA	SAT, HAI
IBD (Gumboro disease)	ELISA	ELISA, AGID
NCD	PCR	VI, HAI
Bovine anaplasmosis	Agt id	CAT, CF
Bovine babesiosis	Agt id	CF, ELISA, IFA
Bovine brucellosis	RBT, SAT, ELISA	BBAT, CF, ELISA, FPA
Bovine cysticercosis	Agt id	Agt id
Bovine tuberculosis	IDT	IDT, IFN γ

Bovine viral diarrhoea	ELISA	Agt id
CBPP	ELISA	ELISA, CF
HS	Agt id	Agt id
IBR	ELISA	Agt id, ELISA, PCR, VN
Theileriosis	Agt id	Agt id, IFA
Trypanosomiasis	Agt id	IFA
EI	IC, ELISA	AGID, ELISA
Equine piroplasmiasis	Agt id	ELISA, IFA, CF
PPR	IC, ELISA	VN, ELISA
CSF	ELISA	ELISA, FAVN, NPLA
PRRS	PCR	ELISA, IFA, IPMA
Toxoplasmosis	ELISA	Agt id

*Practical value

**Prescribed/alternative

National Centre for Animal Health

Department of Livestock

P.O. Box 155

Serbithang: Bhutan

Tel: +975-2-351083/351093

Fax: +975-2-351095

[http: www.ncah.gov.bt](http://www.ncah.gov.bt)

